

CULLMAN COUNTY COMMISSION AGENDA
November 16, 2021

1. Call to order and welcome guests
2. Call of Roll to Establish Quorum, Invocation and Pledge of Allegiance
3. Approve the minutes of the October 19, 2021 Meeting, appropriations, expenditures, personnel actions, payroll, and requisitions and approve all journal entries to be posted
4. Public Comments/Updates
5. **NEW BUSINESS**
 - A. Recognition: Jesse Cummings returning from 1-year of deployment
 - B. Recognition: Adam Barefoot returning from 1-year of deployment
 - C. Recognition: All Cullman County Employees who have served in any branch of Military
 - D. Recognition: Emma Walker retiring after 17 years of service with the Sanitation Department
 - E. Resolution 2022-03: Authorize Chairman Clemons to sign agreement between the State of Alabama and Cullman County Commission covering widening and resurfacing on County Road 1301 from SR-3(US-31) to County Road 1435-Project No. HRRR-2221(251)-County's portion is \$29,244.74
 - F. Resolution 2022-04: Consider relocating Voting Precinct Crane Hill Fire Department, also known as Beat 12, to Crane Hill Fire Department Community Building
 - G. Resolution 2022-05: Making speed limit to 20 mile per hour on County Road 1286
 - H. Resolution 2022-06: Authorize Chairman Clemons to sign grant agreement to provide the matching share of \$275,413.38 or 43% of the total project cost for the Recreational Trails Program Project 21-RT-55-01(Stoney Lonesome OHV Park Trail Improvements)
 - I. Resolution 2022-07: Authorize Chairman Clemons to sign grant agreement to provide the matching share of \$39,948.72 or 20% of the total project cost for the Recreational Trails Program Project 21-RT-55-02(Stoney Lonesome OHV Park Trail Improvements)
 - J. Ratify Enterprise Agreement to change trucks from Dodge to Ford and increase agreement by \$9,528.00
 - K. Ratify agreement with Bulldog Steel Structures to reflect change to Carolina Carports Inc. in the amount of \$39,144.15 for construction of metal building at Sportsman's Lake Park and authorize Chairman Clemons to sign all related paperwork
 - L. Authorize Chairman Clemons to sign renewal for a 1-year term of lease agreement for Bates Building with Cullman Electric Co-op
 - M. Authorize Chairman Clemons to reappoint Geoff McGukin to the Solid Waste Authority Board for a 4-year term to expire 11/20/25
 - N. Authorize Commissioner Marchman to reappoint Jerry Smith to the Solid Waste Authority Board for a 4-year term to expire 11/20/24

- O. Authorize Chairman Clemons to sign agreement with Major League Fishing Tournaments in partnership with the City of Cullman and Cullman Area Chamber of Commerce and consider the County's appropriation of \$25,000
 - P. Consider proposed Memorandum of Agreement to build a storage building on a portion of property leased by the Fair Association on March 15, 2010 and authorize Commission to sign
 - Q. Consider approval of annual Harris Smartfusion invoice in the amount of \$19,108.17
 - R. Consider awarding bid to A&S Electrical Contractors, Inc recommended by CDG Engineers & Associates, Inc for power backup on five storm shelters in the amount of \$56,500.00 and authorize Chairman Clemons to sign all related paperwork
 - S. Consider changes to county's nepotism policy
 - T. Award Bid # 1366: for complete reroofing project for county property located at 310 3rd Ave NE Cullman, AL 35055 to: Bond Construction, LLC in the amount of \$149,000
 - U. Bid # 1367 for Traffic Signs: award to Traffic Signs
 - V. Bid # 1368 for Traffic Striping: award to J.C. Cheek & Ozark Striping Company(Based on availability)
 - W. Bid # 1369 for Corrugated Metal Pipe: award to Twin Oaks Environmental
6. The next Commission Work Session will be Tuesday, December 28, 2021, at 4:00 p.m. in the Commission Meeting Room
7. The next Commission Meeting will be Tuesday, December 28, 2021, at 6:00 p.m. in the Commission Meeting Room
8. Adjourn

CULLMAN COUNTY COMMISSION MEETING
November 16, 2021

CALL TO ORDER AND WELCOME GUESTS

Chairman Clemons called the Meeting at 6:00 p.m.

CALL OF ROLL TO ESTABLISH QUORUM

Tiffany Merriman, County Clerk, called the roll; present were Chairman Jeff Clemons, Commissioner Kerry Watson, Commissioner Garry Marchman, County Administrator John Bullard, County Attorney Emily Johnston, and County Engineer Bryan Cheatwood. Larry Duke gave the invocation. Sheriff Matt Gentry led the Pledge of Allegiance.

APPROVE THE MINUTES OF THE OCTOBER 19, 2021 MEETING, APPROPRIATIONS, EXPENDITURES, PERSONNEL ACTIONS, PAYROLL, AND REQUISITIONS AND APPROVE ALL JOURNAL ENTRIES TO BE POSTED

Commissioner Watson made a motion to approve the minutes of the October 19, 2021 Meeting, appropriations, expenditures, personnel actions, payroll, and requisitions and approve all journal entries to be posted. Commissioner Marchman seconded. The motion passed on a unanimous voice vote.

PUBLIC COMMENTS/UPDATES

Chairman Clemons addressed the Commission and stated the Christmas lights ribbon-cutting at Sportsman Lake Park will be on November 19, 2021, at 5:00 p.m., and everyone is welcome.

NEW BUSINESS

Recognition: Jesse Cummings returning from 1-year of deployment

Commissioner Marchman made a motion to approve the Recognition: Jesse Cummings returning from 1-year of deployment. Commissioner Watson seconded. The vote passed on a unanimous voice vote.

Recognition: Adam Barfoot returning from 1-year of deployment

Commissioner Watson made a motion to approve the Recognition: Adam Barefoot returning from 1-year of deployment. Commissioner Marchman seconded, and the motion passed upon a unanimous voice vote.

Recognition: All Cullman County Employees who have served in any branch of Military

Commissioner Marchman made a motion to approve the Recognition: All Cullman County Employees who have served in any branch of Military. Commissioner Watson seconded. The vote passed on a unanimous voice vote.

Recognition: Emma Walker retiring after 17 years of service with the Sanitation Department

Human Resource Manager Judy Bradford read the certificate to Emma Walker. Commissioner Watson made a motion to approve the Recognition: Emma Walker retiring after 17 years of service with the Sanitation Department. Commissioner Marchman seconded, and the motion passed upon a unanimous voice vote.

Resolution 2022-03: Authorize Chairman Clemons to sign agreement between the State of Alabama and Cullman County Commission covering widening and resurfacing on County Road 1301 from SR-3(US-31) to County Road 1435-Project No. HRRR-2221(251)-County's portion is \$29,244.74

County Engineer Bryan Cheatwood advised this agreement is for safety improvements on County Road 1301. Mr. Cheatwood recommends the approval of this Resolution. Commissioner Marchman made a motion to approve Resolution 2022-03: Authorize Chairman Clemons to sign agreement between the State of Alabama and Cullman County Commission covering widening and resurfacing on County Road 1301 from SR-3(US-31) to County Road 1435-Project No. HRRR-2221(251)-County's portion is \$29,244.74. Commissioner Watson seconded. The vote passed on a unanimous voice vote.

Resolution 2022-04: Consider relocating Voting Precinct Crane Hill Fire Department, also known as Beat 12, to Crane Hill Fire Department Community Building

Probate Judge Tammy Brown addressed the Commission and stated on September 21, 2021, we were presented with a letter from the Fire Chief Brandon Williams and the Election Official Callie Garmon from Crane Hill Fire Department to move the voting location and rename it to the Crane Hill Fire Department Community Center. It will still be Beat 12. The precinct lines did not change. They feel it will be a better service for the voters. Commissioner Marchman made a motion to approve Resolution 2022-04: Consider relocating Voting Precinct Crane Hill Fire Department, also known as Beat 12, to Crane Hill Fire Department Community Building. Commissioner Watson seconded. The vote passed on a unanimous voice vote.

Resolution 2022-05: Making speed limit to 20 miles per hour on County Road 1286

County Engineer Bryan Cheatwood advised after review from our engineering staff; I do recommend the approval of the speed limit to 20 miles per hour on County Road 1286. Commissioner Watson made a motion to approve Resolution 2022-05: Making speed limit to 20 miles per hour on County Road 1286. Commissioner Marchman seconded, and the motion passed on a unanimous voice vote.

Resolution 2022-06: Authorize Chairman Clemons to sign grant agreement to provide the matching share of \$275,413.38 or 43% of the total project cost for the Recreational Trails Program Project 21-RT-55-01(Stoney Lonesome OHV Park Trail Improvements)

Economic Director Bradley Williams stated this is the final resolution accepting financial assistance from ADECA. The 43% is the percent in-kind because we had to separate the grants. All the in-kind is under this one grant. This grant will be for the trail and bridges. Commissioner Watson made a motion to approve Resolution 2022-06: Authorize Chairman Clemons to sign grant agreement to provide the matching share of \$275,413.38 or 43% of the total project cost for the Recreational Trails Program Project 21-RT-55-01(Stoney Lonesome OHV Park Trail Improvements). Commissioner Marchman seconded. Upon a unanimous voice vote, the motion carried.

Resolution 2022-07: Authorize Chairman Clemons to sign grant agreement to provide the matching share of \$39,948.72 or 20% of the total project cost for the Recreational Trails Program Project 21-RT-55-02(Stoney Lonesome OHV Park Trail Improvements)

Economic Director Bradley Williams advised this is the second part of the grant. This grant is for equipment and other items needed. Commissioner Marchman asked County Administrator John Bullard if we pay the matching funds up front? Do we do a transfer out? County Administrator John Bullard explained typically, they would not be paid upfront. It would be as the work is done. If it is a cash payment, it will be for work that is being done or for equipment that is being purchased as it is received.

Commissioner Marchman made a motion to approve Resolution 2022-07: Authorize Chairman Clemons to sign grant agreement to provide the matching share of \$39,948.72 or 20% of the total project cost for the Recreational Trails Program Project 21-RT-55-02(Stoney Lonesome OHV Park Trail Improvements). Commissioner Watson seconded. The vote passed on a unanimous voice vote.

Ratify Enterprise Agreement to change trucks from Dodge to Ford and increase agreement by \$9,528.00
County Administrator John Bullard advised when we brought this to the Commission last month all Enterprise had available were Dodge trucks. There was talk about the ability to upgrade to a Ford truck if the Commission desired and the Ford trucks became available. The amount is \$9,528.00, and this is across six different trucks. The cost per truck is \$1,588.00. Commissioner Watson made a motion to Ratify Enterprise Agreement to change trucks from Dodge to Ford and increase agreement by \$9,528.00. Commissioner Marchman seconded, and the motion passed upon a unanimous voice vote.

Ratify agreement with Bulldog Steel Structures to reflect change to Carolina Carports Inc. in the amount of \$39,144.15 for construction of metal building at Sportsman's Lake Park and authorize Chairman Clemons to sign all related paperwork

County Administrator John Bullard stated this was approved in a prior meeting for the Bulldog Steel Structures to install the building at Sportsman's Lake Park. They have subcontracted to Carolina Carports, and the price has decreased. The new price reflects \$39,144.15. The only reason we are bringing this back up in a meeting is that we have to have a new agreement signed with Carolina Carports Inc. Commissioner Marchman made a motion to Ratify the agreement with Bulldog Steel Structures to reflect change to Carolina Carports Inc. in the amount of \$39,144.15 for construction of metal building at Sportsman's Lake Park and authorize Chairman Clemons to sign all related paperwork. Commissioner Watson seconded. The vote passed on a unanimous voice vote.

Authorize Chairman Clemons to sign renewal for a 1-year term of lease agreement for Bates Building with Cullman Electric Co-op

County Attorney Emily Johnston advised this was in the original contract. The Cullman Electric Co-op has the option to renew. The rent will go up by 3%. They have the option for renewal two other times if you agree to the renewal. Chairman Clemons stated how much are they paying rent for currently? County Attorney Emily Johnston stated currently \$3,000.00, and it will be increasing. Commissioner Marchman stated that this is where the Sprout Internet is being housed, and this is what is bringing better internet to Cullman County. Commissioner Watson made a motion to authorize Chairman Clemons to sign renewal for a 1-year term of lease agreement for Bates Building with Cullman Electric Co-op. Commissioner Marchman seconded. Upon a unanimous voice vote, the motion carried.

Authorize Chairman Clemons to reappoint Geoff McGukin to the Solid Waste Authority Board for a 4-year term to expire 11/20/25

Commissioner Marchman made a motion to authorize Chairman Clemons to reappoint Geoff McGukin to the Solid Waste Authority Board for a 4-year term to expire 11/20/25. Commissioner Watson seconded. The vote passed on a unanimous voice vote.

Authorize Commissioner Marchman to reappoint Jerry Smith to the Solid Waste Authority Board for a 4-year term to expire 11/20/24

Commissioner Watson made a motion to Authorize Commissioner Marchman to reappoint Jerry Smith to the Solid Waste Authority Board for a 4-year term to expire 11/20/24. Commissioner Marchman seconded, and the motion passed upon a unanimous voice vote.

Authorize Chairman Clemons to sign agreement with Major League Fishing Tournaments in partnership with the City of Cullman and Cullman Area Chamber of Commerce and consider the County's appropriation of \$25,000

Commissioner Marchman made a motion to authorize Chairman Clemons to sign agreement with Major League Fishing Tournaments in partnership with the City of Cullman and Cullman Area Chamber of Commerce and consider the County's appropriation of \$25,000. Commissioner Watson seconded. The vote passed on a unanimous voice vote.

Consider proposed Memorandum of Agreement to build a storage building on a portion of property leased by the Fair Association on March 15, 2010, and authorize Commission to sign

Commissioner Watson made a motion to Consider proposed Memorandum of Agreement to build a storage building on a portion of property leased by the Fair Association on March 15, 2010, and authorize Commission to sign. Commissioner Marchman seconded, and the motion passed upon a unanimous voice vote.

Consider approval of annual Harris Smartfusion invoice in the amount of \$19,108.17

County Administrator John Bullard advised this is our accounting financial software. It is a budgeted expenditure. Commissioner Marchman made a motion to Consider approval of annual Harris Smartfusion invoice in the amount of \$19,108.17. Commissioner Watson seconded. Upon a unanimous voice vote, the motion carried.

Consider awarding bid to A&S Electrical Contractors, Inc recommended by CDG Engineers & Associates, Inc for power backup on five storm shelters in the amount of \$56,500.00 and authorize Chairman Clemons to sign all related paperwork

Economic Development Project Coordinator Matt Kinsland stated this is a requirement to add back-up power to Brushy Pond, Crane Hill, Colony, Hanceville, and Commission on Aging storm shelters for us to close out the grants with FEMA. CDG did the design work on the electrical backup. We had three bidders that submitted bids, and of the three, A&S Electrical Contractors, Inc was the lowest bid at \$56,500.00. Commissioner Watson made a motion to consider awarding bid to A&S Electrical Contractors, Inc recommended by CDG Engineers & Associates, Inc for power backup on five storm shelters in the amount of \$56,500.00 and authorize Chairman Clemons to sign all related paperwork. Commissioner Marchman seconded, and the motion passed upon a unanimous voice vote.

Consider changes to county's nepotism policy

County Attorney Emily Johnston addressed the Commission and stated we are having a problem with getting employees. We have job openings, but we just do not have people who can fill the openings. This will allow relatives to work under the same department, but they cannot work under the same district or have the same immediate supervisor. This will open a lot more opportunities for other people to apply and to fill the positions that are needed at this time. Commissioner Marchman made a motion to consider changes to county's nepotism policy. Commissioner Watson seconded. Upon a unanimous voice vote, the motion carried.

Award Bid # 1366: for complete reroofing project for county property located at 310 3rd Ave NE Cullman, AL 35055 to: Bond Construction, LLC in the amount of \$149,000

County Administrator John Bullard explained Bond Construction, LLC was the low bidder on this project. This project is for the Victim Services property. This is to replace the roof, which is a much-needed repair. Commissioner Watson made a motion to Award Bid # 1366: for complete reroofing project for county property located at 310 3rd Ave NE Cullman, AL 35055 to: Bond Construction, LLC in the amount of \$149,000. Commissioner Marchman seconded, and the motion passed upon a unanimous voice vote.

Bid # 1367 for Traffic Signs: award to Traffic Signs

County Engineer Bryan Cheatwood stated I do recommend the award of this bid. Commissioner Marchman made a motion to approve Bid # 1367 for Traffic Signs: award to Traffic Signs. Commissioner Watson seconded. The vote passed on a unanimous voice vote.

Bid # 1368 for Traffic Striping: award to J.C. Cheek & Ozark Striping Company(Based on availability)

County Engineer Bryan Cheatwood advised they have included a second option due to supply chains. This will give us more options, and I do recommend approval of this bid. Commissioner Watson made a motion to approve Bid # 1368 for Traffic Striping: award to J.C. Cheek & Ozark Striping Company(Based on availability). Commissioner Marchman seconded, and the motion passed upon a unanimous voice vote.

Bid # 1369 for Corrugated Metal Pipe: award to Twin Oaks Environmental

County Engineer Bryan Cheatwood stated I do recommend approval of this bid. Commissioner Marchman asked if we are doing all corrugated pipe through this group? Mr. Cheatwood advised for this term. The other groups did not want to bid. We are doing it short term. Commissioner Marchman made a motion to approve Bid # 1369 for Corrugated Metal Pipe: award to Twin Oaks Environmental. Commissioner Watson seconded. The vote passed on a unanimous voice vote.

Consider moving December Commission Meeting from December 21, 2021, to December 28, 2021

Commissioner Watson made a motion to approve moving December Commission Meeting from December 21, 2021 to December 28, 2021. Commissioner Marchman seconded, and the motion passed upon a unanimous voice vote.

WORK SESSION

Chairman Clemons announced the next Commission Work Session will be Tuesday, December 28, 2021, at 4:00 p.m. in the Commission Meeting Room

NEXT REGULAR COMMISSION MEETING TUESDAY, DECEMBER 28, 2021

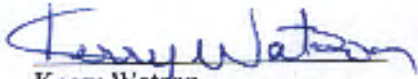
Chairman Clemons announced the next Commission Meeting will be Tuesday, December 28, 2021, at 6:00 p.m. in the Commission Meeting Room

ADJOURN THE MEETING

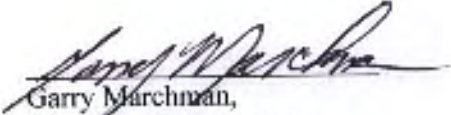
Commissioner Watson made a motion to Adjourn. Commissioner Marchman seconded. Meeting was adjourned at 6:24 p.m.



Jeff Clemons,
Chairman



Kerry Watson,
Associate Commissioner



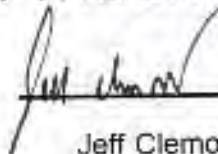
Garry Marchman,
Associate Commissioner

Certificate of Appreciation

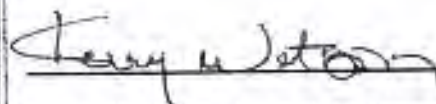
PRESENTED TO

Jesse Cummings

FOR YOUR DEDICATION TO OUR COUNTRY AND ITS MILITARY IS
COMMENDABLE AND AN HONORABLE ADDITION TO THE FIGHT FOR
FREEDOM THOURGHOUT THE WORLD.



Jeff Clemons, Chairman



Kerry Watson, Associate Commissioner



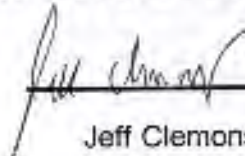
Garry Marchman, Associate Commissioner

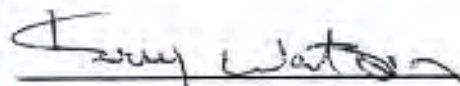
Certificate of Appreciation

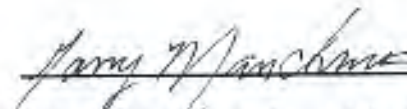
PRESENTED TO

Adam Barfoot

FOR YOUR DEDICATION TO OUR COUNTRY AND ITS MILITARY IS
COMMENDABLE AND AN HONORABLE ADDITION TO THE FIGHT FOR
FREEDOM THOURGHOUT THE WORLD


Jeff Clemons, Chairman


Kerry Watson, Associate Commissioner


Garry Marchman, Associate Commissioner

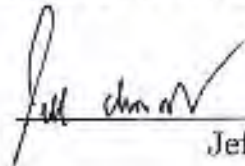
CONGRATULATIONS ON YOUR RETIREMENT

Emma Walker

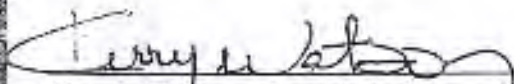
May the blessings of good health, the joy of good friends, a loving family and the contentment of a job well done fill your life with happiness!

Best wishes from all of your colleagues and friends at

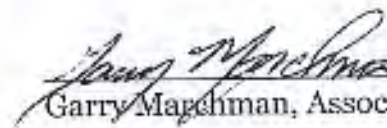
CULLMAN COUNTY COMMISSION



Jeff Clemons, Chairman



Kerry Watson, Associate Commissioner



Garry Marchman, Associate Commissioner

January 2004 – November 2021

EMERGENCY MANAGEMENT OATH OF OFFICE

State of Alabama

I, Timothy (Tim) Sartin, do solemnly swear (or affirm) that I will support and defend the Constitution of the United States and the Constitution of the State of Alabama, against all enemies, foreign and domestic; that I will bear true faith and allegiance to the same; that I take this obligation freely, without any mental reservation or purpose of evasion; and that I will well and faithfully discharge the duties upon which I am about to enter.

And I do further swear (or affirm) that I do not advocate nor am I a member of any political party or organization that advocates, the overthrow of the Government of the United States or of this State by force or violence; and that during such time as I am a member of the Cullman County Emergency Management Agency I will not advocate nor become a member of any political party or organization that advocates the overthrow of the Government of the United States or of this State by force or violence.

Timothy Sartin

Sworn to and subscribed before me this the 18th day of November, 2021



Angela Lockhart
Notary Public

**CONSTRUCTION
AGREEMENT
FOR A
HIGH RISK RURAL ROADS PROGRAM
PROJECT**

**BETWEEN THE STATE OF ALABAMA
AND
CULLMAN COUNTY COMMISSION**

Project No. HRRR-2221(251)
County Project No. CCP 22-11-20
CPMS Ref# 100072711

PART ONE (1): INTRODUCTION

This Agreement is made and entered into by and between the State of Alabama (acting by and through the Alabama Department of Transportation), hereinafter referred to as the STATE; and the Cullman County Commission, Alabama, (FEIN 63-6001496) hereinafter referred to as the COUNTY.

WHEREAS, the STATE and the COUNTY desire to cooperate on a project for Widening and Resurfacing on CR-1301 from SR-3 (US-31) to CR-1435; HRRR-2221(251); County Project No. CCP 22-11-20; CPMS Ref# 100072711.

NOW, THEREFORE, it is mutually agreed between the STATE and the COUNTY as follows:

PART TWO (2): FUNDING PROVISIONS

- A. **Project Funding:** Funding for this Agreement is subject to availability of Federal Aid funds at the time of authorization. Cost for the project will be financed, when eligible for Federal participation, on the basis of 90 percent High Risk Rural Roads funds (HRRR) and 10 percent COUNTY funds. Any deficiency in Federal Aid or overrun in costs will be borne by the COUNTY from COUNTY funds unless approved in writing by the STATE. In the event of an underrun in construction costs, the amount of Federal Aid funds will be the amount stated below, or 90% of eligible costs, whichever is less.
- B. **Estimated Cost:** The estimated cost and participation by the various parties is as follows:

	ESTIMATED COSTS
HRRR Funds	\$263,202.62
County Funds – 10% HRRR Match	<u>\$ 29,244.74</u>
TOTAL (Incl CE&I & Indirect Cost)	\$292,447.36

It is further understood that this is a cost reimbursement program and no federal funds will be provided to the COUNTY prior to accomplishment of the work for which it is requested. Furthermore, no federal funds will be reimbursed for work performed prior to project authorization.

Any cost incurred by the COUNTY relating to this project which is determined to be ineligible for reimbursement by the Federal Highway Administration (FHWA), or in excess of the limiting amounts previously stated, will not be an eligible cost to the project and will be borne and paid by the COUNTY.

- C. **Time Limit:** This project will commence upon written authorization to proceed from the STATE directed to the COUNTY. The project shall be advanced to authorization by the end of the fiscal year, unless approved in writing by the State. The COUNTY agrees that the STATE may unilaterally extend the time of the agreement.

PART THREE (3): PROJECT SERVICES

- A. The COUNTY will furnish all Right-of-Way for the project. Associated Right-of-Way acquisition costs will not be an eligible cost as part of this Agreement. The Right-of-Way acquisition phase is hereby defined as the appraisal fees, appraisal review fees and the cost of acquisition incurred.
- All work accomplished under the provisions of this Agreement will be accomplished on property owned by or which will be acquired by the COUNTY in accordance with applicable Federal and state laws, regulations, and procedures. Any exceptions to this requirement must be approved by the STATE in writing prior to incurring costs for which reimbursement is requested by the COUNTY. In cases where property is leased, or easements obtained, the terms of the lease or easement will not be less than the expected life of the improvements.
- Acquisition of real property by the COUNTY as a part of this project will conform to and be in accordance with the provisions of the Federal Uniform Relocation Assistance & Real Property Acquisition Policies Act (49 CFR 24, Subpart B), all federal environmental laws, and all other applicable state and federal laws.
- Any property or property interests acquired shall be in the name of the COUNTY with any condemnation or other legal proceedings being performed by the COUNTY.
- The COUNTY shall follow all Federal regulations related to the Management, Leasing, and Disposal of Right-of-Way, uneconomic remnants and excess Right-of-Way as found in CFR 23 § 710 Subpart D. Proceeds for Leases and Disposals shall be credited to the Project or to the Title 23 Collector Account.
- No change in use or ownership of real property acquired or improved with funds provided under the terms of this Agreement will be permitted without prior written approval from the STATE or FHWA. The STATE or FHWA will be credited on a prorata share, as provided in Part Two, Section B, any revenues received by the COUNTY from the sale or lease of property.
- B. The COUNTY will relocate any utilities in conflict with the project improvements in accordance with applicable Federal and State laws, regulations, and procedures. Associated Utility costs will not be an eligible cost as part of this Agreement.
- C. The COUNTY will make the Survey, perform the Design, complete the Plans and furnish all Preliminary Engineering for the project with COUNTY forces or with a consultant approved by the STATE. Associated Survey, Design, Plan Preparation, and Preliminary Engineering costs will not be an eligible cost as part of this Agreement.
- If any Associated Survey, Design, Plan Preparation, and Preliminary Engineering costs are an eligible cost to the project, the COUNTY will develop and submit to the STATE a project budget for approval. This budget will be in such form and detail as may be required by the STATE. At a minimum, all major work activities will be described, and an estimated cost and source of funds will be indicated for each activity. A signature line will be provided for approval by the Region Engineer and date of such approval. All costs for which the COUNTY seeks reimbursement must be included in a budget approved by the STATE in order to be considered for reimbursement. Budget adjustments may be necessary and may be allowed, subject to the approval of the STATE in writing, in order to successfully carry out the project. However, under no circumstances will the COUNTY be reimbursed for expenditures over and beyond the amount approved by the STATE.

The COUNTY will undertake the project in accordance with this Agreement, plans approved by the STATE and the requirements, and provisions, including the documents relating thereto, developed by the COUNTY and approved by the STATE. The plans, including the documents relating thereto, are of record in the Alabama Department of Transportation and are hereby incorporated in and made a part of this Agreement by reference. It is understood by the COUNTY that failure of the COUNTY to carry out the project in accordance with this Agreement and approved plans, including documents related thereto, may result in the loss of federal or state funding and the refund of any federal or state funds previously received on the project.

- D. The COUNTY will furnish all construction engineering for the project with COUNTY forces or with a consultant approved by the STATE as part of the cost of the project. Construction Engineering & Inspection cost are not to exceed 15%, without prior approval by the State. Associated Construction Engineering & Inspection costs will be an eligible cost as part of this Agreement.
- E. The STATE will furnish the necessary inspection and testing of materials when needed as part of the cost of the project. The COUNTY may request the use of an approved third-party materials inspection and testing provider, as approved by the STATE.

PART FOUR (4): CONTRACT PROVISIONS

- A. The COUNTY shall not proceed with any project work covered under the provisions of this Agreement until the STATE issues written authorization to the COUNTY to proceed.
- B. Associated Construction cost will be an eligible cost as part of this Agreement. For projects let to contract by the STATE, the STATE will be responsible for advertisement and receipt of bids and the award of the Contract. Following the receipt of bids and prior to the award of the Contract, the STATE will invoice the COUNTY for its pro rata share of the estimated cost as reflected by the bid of the successful bidder plus Engineering & Inspection and Indirect Costs (if applicable). The COUNTY shall pay this amount to the STATE no later than 30 days after the date bids are opened. Failure to do so may lead to the rejection of the bid.
For projects let to contract by the COUNTY, the COUNTY shall comply with all Federal and State laws, rules, regulations and procedures applicable to the advertisement, receipt of bids, and the award of the contract. The COUNTY will, when authorized by the STATE, solicit bids and make awards for construction and/or services pursuant to this Agreement. The COUNTY shall not solicit bids until the entire bid package (plans, specifications, estimates, etc.) has been reviewed and approved by the STATE. Following receipt of bids, the COUNTY will provide all bids to the STATE with a recommendation for award. The COUNTY shall not award the contract until it has received written approval from the STATE.
For projects with approval by the STATE to use COUNTY Forces, the Construction for the project will be performed by the COUNTY at actual costs for labor, materials, and equipment, as approved by the STATE.
The purchase of project equipment and/or services financed in whole or in part pursuant to this Agreement will be in accordance with applicable Federal and State laws, rules, regulations, and procedures, including state competitive bidding requirements applicable to counties and municipalities in the State of Alabama when the purchase is made by any such entity.
- C. If necessary, the COUNTY will file an Alabama Department of Environmental Management (ADEM) National Pollutant Discharge Elimination System (NPDES) Notice of Registration (NOR) (Code Chapter 335-6-12) for this project without cost to the State or this project. The COUNTY will be the permittee of record with ADEM for the permit. The COUNTY and the contractor will be responsible for compliance with the permit and the State will have no obligation regarding the permit. The COUNTY will furnish the State (Region) a copy of the permit prior to any work being performed by the contractor.

The COUNTY will secure all permits and licenses of every nature and description applicable to the project in any manner; conform to and comply with the requirements of any such permit or license; and comply with each and every requirement of any and all agencies, and of any and all lawful authorities having jurisdiction or requirements applicable to the project or to the project activities.

- D. The COUNTY will comply with the Alabama Department of Transportation Standard Specifications for Highway Construction, Latest Edition, on this project and will ensure that work associated on this project meets the standards of the Alabama Department of Transportation, and the project will be built in accordance with the approved plans.
- E. The COUNTY shall be responsible at all times for all of the work performed under this Agreement and, as provided in Ala. Code § 11-93-2 (1975), the COUNTY shall indemnify and hold harmless the State of Alabama, The Alabama Department of Transportation, its officers, officials, agents, servants, and employees.
For all claims not subject to Ala. Code § 11-93-2 (1975), the COUNTY shall indemnify and hold harmless the State of Alabama, the Alabama Department of Transportation, its officers, officials, agents, servants, and employees from and against any and all damages, claims, loss, liabilities, attorney's fees or expense whatsoever or any amount paid in compromise thereof arising out of, connected with, or related to the (1) work performed under this Agreement, (2) the provision of any services or expenditure of funds required, authorized, or undertaken by the COUNTY pursuant to the terms of this Agreement, or (3) misuse, misappropriation, misapplication, or misexpenditure of any source of funding, compensation or reimbursement by the COUNTY, its officers, officials, agents, servants, and employees.
- F. The COUNTY will be obligated for the payment of damages occasioned to private property, public utilities or the general public caused by the legal liability (in accordance with Alabama and/or Federal law) of the COUNTY, its agents, servants, employees or facilities.
- G. Upon completion and acceptance of this project by the State, the COUNTY will assume full ownership and responsibility for the portion of the project work on COUNTY right-of-way and maintain the project in accordance with applicable State law and comply with the Department's Local Road Maintenance Certification Policy.

PART FIVE (5): ACCOUNTING PROVISIONS

- A. The COUNTY will, when appropriate, submit reimbursement invoices to the STATE for work performed in carrying out the terms of this Agreement. Requests for reimbursement will be made on forms provided by the STATE and will be submitted through the Region Engineer for payment. The COUNTY may invoice the STATE not more often than once per month for the funds due for work performed under this Agreement. Invoices for payment will be submitted in accordance with state law and will indicate that the payment is due, true, correct, and unpaid, and the invoice will be notarized. Invoices for any work performed under the terms of this Agreement will be submitted within twelve (12) months after the completion and acceptance by the STATE of the work. Any invoices submitted after this twelve-month period will not be eligible for payment.
- B. The COUNTY will not assign any portion of the work to be performed under this Agreement or execute any contract, amendment or change order thereto, or obligate itself in any manner with any third party with respect to its rights and responsibilities under this Agreement, without the prior written approval of the STATE.
- C. The COUNTY will establish and maintain a cost accounting system that must be adequate and acceptable to the STATE as determined by the auditor of the STATE. All charges to the Project will be supported by properly executed invoices, contracts, or vouchers, as applicable, evidencing in proper detail the nature and propriety of the charges in accordance with the requirements of the STATE. All checks, invoices, contracts, vouchers, orders or other accounting documents pertaining in whole or in part

to the project will be clearly identified, readily accessible and to the maximum extent feasible, kept separate and apart from all other such documents.

The COUNTY will report to the STATE the progress of the project in such manner as the STATE may require. The COUNTY will also provide the STATE any information requested by the STATE regarding the project. The COUNTY will submit to the STATE financial statements, data, records, contracts and other documents and items of any respect related to the project as may be requested by the STATE.

The COUNTY will permit the STATE, the Comptroller General of the United States, and the Secretary of the USDOT, or either of them or their respective authorized representatives, to inspect, at any time, vehicles and equipment utilized or used in performance of the project and any and all data and records which in any way relate to the project or to the accomplishment of the project. The COUNTY will also permit the above noted persons to audit the books, records and accounts pertaining to the project at any and all times, and the COUNTY will give its full cooperation to those persons or their authorized representatives, as applicable.

The COUNTY will comply with all audit requirements set forth in the 2 CFR Part 200 requirements, or the most current version of those requirements under federal law.

- D. The COUNTY will retain all books, records, and other documents relative to this Agreement for a minimum of three (3) years after project termination, expiration of Federal interest, or close out, and the STATE, the Comptroller General of the United States, and the Secretary of the USDOT, or either of them or their respective authorized representatives, will have full access to and the right to examine any of said materials at all reasonable times during said period.
- E. Any user fee or charge to the public for access to any property or services provided through the funds made available under this Agreement, if not prohibited by a Federal, State or local law, must be applied for the maintenance and long-term upkeep of the project authorized by this agreement.
- F. An audit report must be filed with the Department of Examiners of Public Accounts, upon receipt by the COUNTY, for any audit performed on this project in accordance with Act No. 94-414.

PART SIX (6): MISCELLANEOUS PROVISIONS

- A. By entering into this Agreement, the COUNTY is not an agent of the STATE, its officers, employees, agents or assigns. The COUNTY is an independent entity from the STATE, and nothing in this Agreement creates an agency relationship between the parties.
- B. It is agreed that the terms and commitments contained in this Agreement shall not constitute a debt of the State of Alabama in violation of Article 11, Section 213 of the Constitution of Alabama, 1901, as amended by Amendment 26. It is further agreed that, if any provision of this Agreement shall contravene any statute or Constitutional provision or amendment, either now in effect or which may be enacted during the term of this Agreement, then the conflicting provision in this agreement shall be deemed null and void.
- C. By signing this Agreement, the contracting parties affirm, for the duration of the Agreement, that they will not violate Federal immigration law or knowingly employ, hire for employment, or continue to employ an unauthorized alien within the State of Alabama. Furthermore, a contracting party found to be in violation of this provision shall be deemed in breach of the Agreement and shall be responsible for all damages resulting therefrom.
- D. No member, officer, or employee of the COUNTY, during their tenure of employment and for one year thereafter, shall have any interest, direct or indirect, in this Agreement or the proceeds, profits, or benefits therefrom.
- E. The terms of this Agreement may be modified by revision of this Agreement duly executed by the parties hereto.
- F. This Agreement may be terminated by either party upon the delivery of a thirty (30) day notice of termination.

- G. Nothing shall be construed under the terms of this Agreement that shall cause any conflict with Section 23-1-63, Code of Alabama, 1975.
- H. **Exhibits A, E, H, M, and N** are hereby attached to and made a part of this Agreement.

IN WITNESS WHEREOF, the parties hereto have caused this Agreement to be executed by those officers, officials and persons duly authorized to execute same, and the Agreement is deemed to be dated and to be effective on the date hereinafter stated as the date of its approval by the Governor of Alabama.

ATTEST:

By: Tiffany Merriman
Clerk (Signature)

Tiffany Merriman
Print Name of Clerk
(AFFIX SEAL)

Cullman County, Alabama
By: Jeff Clemmons
As Chairman (Signature)

Jeff "Clem" Clemmons
Print Name of Chairman

This agreement has been legally reviewed and approved as to form and content.

By: _____
William F. Patty,
Chief Counsel

RECOMMENDED FOR APPROVAL:

Bradley B. Lindsey, P.E.
State Local Transportation Engineer

Edward N. Austin, P. E.
Chief Engineer
STATE OF ALABAMA, ACTING BY AND THROUGH
THE ALABAMA DEPARTMENT OF TRANSPORTATION

John R. Cooper, Transportation Director

THE WITHIN AND FOREGOING AGREEMENT IS HEREBY EXECUTED AND SIGNED BY THE GOVERNOR ON THIS _____ DAY OF _____, 20_____.

KAY IVEY
GOVERNOR, STATE OF ALABAMA

RESOLUTION NUMBER 2022-03

HRRR-2221(251)

BE IT RESOLVED, by the Cullman County Commission as follows:

That the County enter into an agreement with the State of Alabama, acting by and through the Alabama Department of Transportation relating to a project for the:

Widening and Resurfacing on CR-1301 from SR-3 (US-31) to CR-1435; HRRR-2221(251); County Project No. CCP 22-11-20; CPMS Ref# 100072711.

Which agreement is before this Commission, and that the agreement be executed in the name of the County, by the Chairman for and on its behalf and that it be attested by the County Clerk and the official seal of the County be affixed thereto.

BE IT FURTHER RESOLVED, that upon the completion of the execution of the agreement by all parties, that a copy of such agreement be kept on file by the County.

I, the undersigned qualified and acting Clerk of Cullman County, Alabama, do hereby certify that the above and foregoing is a true copy of a resolution lawfully passed and adopted by the County named therein, at a regular meeting of such Commission held on the 16th day of November, 2021, and that such resolution is on file in the County Clerk's Office.

ATTESTED:

[Signature]
County Clerk

[Signature]
Chairman

16th day of November, 2021, and that such resolution is of record in the Minute Book of the County.

IN WITNESS WHEREOF, I have hereunto set my hand and affixed the official seal of the County on this 16th day of November, 2021.

[Signature]
County Clerk

(AFFIX SEAL)

EXHIBIT A

PARTICIPATION BY DISADVANTAGED BUSINESS ENTERPRISES IN FEDERAL-AID PROGRAM

Policy. It is the policy of the U.S. Department of Transportation that Disadvantaged Business Enterprises (DBE) as defined in 49 CFR Part 26 shall have the opportunity to participate in the performance of contracts financed in whole or in part with Federal funds under this AGREEMENT. Consequently, the DBE requirements of 49 CFR Part 26 apply to this AGREEMENT.

DBE Obligation. The recipient of funds under the terms of this AGREEMENT agrees to ensure that Disadvantaged Business Enterprises as defined in 49 CFR Part 26 have the maximum opportunity to participate in the performance of contracts and subcontracts financed in whole or in part with Federal funds provided under this agreement. The recipient shall take all necessary and reasonable steps in accordance with 49 CFR Part 26 to see that Disadvantaged Business Enterprises have the opportunity to compete for and perform contracts and shall not discriminate on the basis of race, color, national origin, or sex in the award and performance of U.S. Department of Transportation assisted contracts.

Failure of the recipient of funds under the terms of this AGREEMENT, or failure of its subcontractor (if a subcontractor is authorized) to carry out the DBE requirements of this AGREEMENT shall constitute a breach of contract, and may result in termination of the contract by the STATE, or such other remedy may be undertaken by the STATE as it deems appropriate.

EXHIBIT E

TERMINATION OR ABANDONMENT

- a. The STATE has the right to abandon the work or to amend its project at any time, and such action on its part shall in no event be deemed a breach of contract.

- b. The STATE has the right to terminate this AGREEMENT at its sole discretion without cause and make settlement with the COUNTY upon an equitable basis. The value of the work performed by the COUNTY prior to the termination of this AGREEMENT shall be determined. In determining the value of the work performed, the STATE shall consider the following:
 1. The ratio of the amount of work performed by the COUNTY prior to the termination of the AGREEMENT to the total amount of work contemplated by this AGREEMENT less any payments previously made.

 2. The amount of the expense to which the COUNTY is put in performing the work to be terminated in proportion to the amount of expense to which the COUNTY would have been put had he been allowed to complete the total work contemplated by the AGREEMENT, less any payments previously made. In determining the value of the work performed by the COUNTY prior to the termination, no consideration will be given to profit, which the COUNTY might have made on the uncompleted portion of the work. If the termination is brought about as a result of unsatisfactory performance on the part of the COUNTY, the value of the work performed by the COUNTY prior to termination shall be fixed solely on the ratio of the amount of such work to the total amount of work contemplated by this AGREEMENT.

CONTROVERSY

In any controversy concerning contract terms, or on a question of fact in connection with the work covered by this project, including compensation for such work, the decision of the Transportation Director regarding the matter in issue or dispute shall be final and conclusive of all parties.

CONTRACT BINDING ON SUCCESSORS AND ASSIGNS

- a. This contract shall be binding upon the successors and assigns of the respective parties hereto.

- b. Should the AGREEMENT be terminated due to default by COUNTY, such termination shall be in accordance with applicable Federal Acquisition Regulations.

EXHIBIT H

Page 1

EQUAL RIGHTS PROVISIONS

During the performance of this contract, the COUNTY for itself, its assignees and successors in interest agrees as follows:

a. **Compliance with Regulations**

The COUNTY will comply with the Regulations of the Department of Transportation relative to nondiscrimination in federally-assigned programs of the Department of Transportation (Title 49, Code of Federal Regulations, Part 21, as amended by 23 CFR 710-405(b), hereinafter referred to as the Regulations), which are herein incorporated by reference and made a part of this contract.

During the performance of this contract, the contractor, for itself, its assignees, and successors in interest (hereinafter referred to as the "contractor") agrees to comply with the following non-discrimination statutes and authorities; including but not limited to:

Pertinent Non-Discrimination Authorities:

- Title VI of the Civil Rights Act of 1964 (42 U.S.C. § 2000d *et seq.*, 78 stat. 252), (prohibits discrimination on the basis of race, color, national origin); and 49 CFR Part 21.
- The Uniform Relocation Assistance and Real Property Acquisition Policies Act of 1970, (42 U.S.C. § 4601), (prohibits unfair treatment of persons displaced or whose property has been acquired because of Federal or Federal-aid programs and projects);
- Federal-Aid Highway Act of 1973, (23 U.S.C. § 324 *et seq.*), (prohibits discrimination on the basis of sex);
- Section 504 of the Rehabilitation Act of 1973, (29 U.S.C. § 794 *et seq.*), as amended, (prohibits discrimination on the basis of disability); and 49 CFR Part 27;
- The Age Discrimination Act of 1975, as amended, (42 U.S.C. § 6101 *et seq.*), (prohibits discrimination on the basis of age);
- Airport and Airway Improvement Act of 1982, (49 USC § 471, Section 47123), as amended, (prohibits discrimination based on race, creed, color, national origin, or sex);
- The Civil Rights Restoration Act of 1987, (PL 100-209), (Broadened the scope, coverage and applicability of Title VI of the Civil Rights Act of 1964, The Age Discrimination Act of 1975 and Section 504 of the Rehabilitation Act of 1973, by expanding the definition of the terms "programs or activities" to include all of the programs or activities of the Federal-aid recipients, sub-recipients and contractors, whether such programs or activities are Federally funded or not);
- Titles II and III of the Americans with Disabilities Act, which prohibit discrimination on the basis of disability in the operation of public entities, public and private transportation systems, places of public accommodation, and certain testing entities (42 U.S.C. §§ 12131-12189) as implemented by Department of Transportation regulations at 49 C.F.R. parts 37 and 38;

EXHIBIT II

Page 2

- The Federal Aviation Administration's Non-discrimination statute (49 U.S.C. § 47123) (prohibits discrimination on the basis of race, color, national origin, and sex);
- Executive Order 12898, Federal Actions to Address Environmental Justice in Minority Populations and Low-Income Populations, which ensures nondiscrimination against minority populations by discouraging programs, policies, and activities with disproportionately high and adverse human health or environmental effects on minority and low-income populations;
- Executive Order 13166, Improving Access to Services for Persons with Limited English Proficiency, and resulting agency guidance, national origin discrimination includes discrimination because of limited English proficiency (LEP). To ensure compliance with Title VI, you must take reasonable steps to ensure that LEP persons have meaningful access to your programs (70 Fed. Reg. at 74087 to 74100);
- Title IX of the Education Amendments of 1972, as amended, which prohibits you from discriminating because of sex in education programs or activities (20 U.S.C. 1681 et seq).

b. **Nondiscrimination**

In accordance with Title VI of the Civil Rights Act, as amended, 42 U.S.C. § 2000d, Section 303 of the Age Discrimination Act of 1975, as amended, 42 U.S.C. § 6102, Section 202 of the Americans with Disabilities Act of 1990, 42 U.S.C. § 12132, and Federal transit law at 49 U.S.C. § 5332, the COUNTY agrees that it will not discriminate against any employee or applicant for employment because of race, color, creed, national origin, sex, age, or disability. The COUNTY will not participate either directly or indirectly in the discrimination prohibited by Section 21.5 of the Regulations, including employment practices where the contract covers a program set forth in Appendix B of the Regulations.

The COUNTY will comply with all provisions of Executive Order 11246 of September 24, 1965 as amended by Executive Order 11375, and of the rules, regulations (41 CFR, Part 60) and relevant orders of the Secretary of Labor,

c. **Solicitations**

In all solicitations either by competitive bidding or negotiation made by the COUNTY for work to be performed under a subcontract, including procurements of materials or leases of equipment, each potential subcontractor, supplier or lessor shall be notified by the COUNTY of the COUNTY'S obligation under this contract and the Regulations relative to nondiscrimination on the ground of race, color, religion, sex or national origin.

d. **Information and Reports**

The COUNTY will provide all information and reports required by the Regulations, or orders and instructions issued pursuant thereto, and will permit access to its books,

EXHIBIT H

Page 3

records, accounts, other sources of information and its facilities as may be determined by the STATE or the Federal Highway Administration to be pertinent to ascertain compliance with such Regulations, orders and instructions. Where any information required of a COUNTY is in the exclusive possession of another who fails or refuses to furnish this information, the COUNTY shall so certify to the STATE, or the Federal Highway Administration as appropriate, and shall set forth what efforts it has made to obtain the information.

e. **Sanctions for Noncompliance**

In the event of the COUNTY'S noncompliance with the nondiscrimination provisions provided for herein, the STATE shall impose such contract sanctions as it may determine to be appropriate, including but not limited to,

1. withholding of payments to the COUNTY under contract until the COUNTY complies, and/or
2. cancellation, termination or suspension of the contract, in whole or in part.

f. **Incorporation of Provisions**

The COUNTY will include the foregoing provisions a. through f. in every subcontract, including procurements of materials and leases of equipment, unless excepted by the Regulations, orders or instructions issued pursuant thereto. The COUNTY will take such action with respect to any subcontract, procurement, or lease as the STATE may direct as a means of enforcing such provisions, including sanctions for noncompliance; provided, however, that in the event a COUNTY becomes involved in, or is threatened with, litigation with subcontractors, suppliers, or lessor as a result of such direction, the COUNTY may request the STATE to enter into such litigation to protect the interest of the STATE.

g. **Equal Employment Opportunity** – The following equal employment opportunity requirements apply to the underlying contract:

1. **Race, Color, Creed, National Origin, Sex** – In accordance with Title VII of the Civil Rights Act, as amended, 42 U.S.C. § 2000e, and Federal Transit laws at 49 U.S.C. § 5332, the COUNTY agrees to comply with all applicable equal employment requirements of U.S. Department of Labor (U.S. DOL) regulations, "Office of Federal Contract Compliance Programs, Equal Employment Opportunity, Department of Labor," 41 C.F.R. Parts 60 et seq., (which implement Executive Order No. 11246, "Equal Employment Opportunity," as amended by Executive Order No. 11375, "Amending Executive Order 11246 Relating to Equal Employment Opportunity," 42 U.S.C. § 2000e note), and with any applicable Federal statutes, executive orders, regulations, and Federal policies that may in the future affect construction activities undertaken in the course of the Project.

EXHIBIT H

Page 4

The COUNTY agrees to take affirmative action to ensure that applicants are employed, and that employees are treated during employment, without regard to their race, color, creed, national origin, sex, or age. Such action shall include, but not limited to, the following: employment, upgrading, demotion or transfer, recruitment or recruitment advertising, layoff or termination; rates of pay or other forms of compensation; and selection for training, including apprenticeship. In addition, the COUNTY agrees to comply with any implementing requirements FTA may issue.

2. Age – In accordance with Section 4 of the Age Discrimination in Employment Act of 1967, as amended, 29 U.S.C. § 623 and Federal transit law at 49 U.S.C. § 5332, the COUNTY agrees to refrain from discrimination against present and prospective employees for reason of age. In addition, the COUNTY agrees to comply with any implementing requirements FTA may issue.
3. Disabilities – In accordance with Section 102 of the Americans with Disabilities Act, as amended, 42 U.S.C. § 12112, the COUNTY agrees that it will comply with the requirements of U.S. Equal Employment Opportunity Commission, "Regulations to Implement the Equal Employment Provisions of the Americans with Disabilities Act," 29 C.F.R. Part 1630, pertaining to employment of persons with disabilities. In addition, the Contractor agrees to comply with any implementing requirements FTA may issue.

COST PRINCIPLES

The STATE'S cost principles for use in determining the allowability of any item of cost, both direct and indirect, in this AGREEMENT, shall be the applicable provisions of Volume I, Federal Acquisition Regulations, Parts 30 and 31. The COUNTY shall maintain costs and supporting documentation in accordance with the Federal Acquisition Regulations, Parts 30 and 31 and other Regulations referenced with these Parts where applicable. The COUNTY shall gain an understanding of these documents and regulations. The applicable provisions of the above referenced regulations documents are hereby incorporated by reference herein as if fully set forth.

EXECUTORY CLAUSE AND NON-MERIT SYSTEM STATUS

- a. The COUNTY specifically agrees that this AGREEMENT shall be deemed executory only to the extent of moneys available, and no liability shall be incurred by the STATE beyond the moneys available for this purpose.

EXHIBIT H

Page 5

- b. The COUNTY, in accordance with the status of COUNTY as an independent contractor, covenants and agrees that the conduct of COUNTY will be consistent with such status, that COUNTY will neither hold COUNTY out as, or claim to be, an officer or employee of the STATE by reason hereof, and that COUNTY will not, by reason hereof, make any claim, demand or application to or for any right or privilege applicable to an officer or employee of the STATE under the merit system or any other law of Alabama, including but not limited to workmen's compensation coverage, or retirement membership or credit or any Federal employment law. This paragraph also applies in like manner to the employees of COUNTY.

COUNTY'S CERTIFICATIONS

The COUNTY by acceptance of this contract certifies that the rates or composition of cost noted in Article IV - PAYMENTS are based on the current actual hourly rates paid to employees, estimated non- salary direct cost based on historical prices, the latest available audited indirect cost rate, and estimated cost of reimbursements to employees for travel (mileage, per diem, and meal allowance) based on the current policy of the COUNTY. The COUNTY agrees that mileage reimbursements for use of company vehicles is based on the lesser of the approved rate allowed by the General Services Administration of the United States Government or the reimbursement policies of the COUNTY at the time of execution of the AGREEMENT. The COUNTY agrees that no mileage reimbursement will be allowed for the purpose of commuting to and from work or for personal use of a vehicle. The COUNTY agrees that the per diem rate will be limited to the rate allowed by the STATE at the time of execution of the AGREEMENT. The COUNTY agrees that a meal allowance shall be limited to COUNTY employees while in travel status only and only when used in lieu of a per diem rate.

The COUNTY shall submit detailed certified labor rates as requested, and in a timely manner, to the External Audits Section of the Finance and Audits Bureau of The Alabama Department of Transportation. The COUNTY agrees that material differences between rates submitted with a proposal and rates provided as certified for the same proposal are subject to adjustment and reimbursement.

EXHIBIT M

CERTIFICATION FOR FEDERAL-AID CONTRACTS: LOBBYING

This certification is applicable to the instrument to which it is attached whether attached directly or indirectly with other attachments to such instrument.

The prospective participant/recipient, by causing the signing of and the submission of this Federal contract, grant, loan, cooperative AGREEMENT, or other instrument as might be applicable under Section 1352, Title 31, U. S. Code, and the person signing same for and on behalf of the prospective participant/recipient each respectively certify that to the best of the knowledge and belief of the prospective participant or recipient and of the person signing for and on behalf of the prospective participant/recipient, that:

- a. No Federal appropriated funds have been paid or will be paid, by or on behalf of the prospective participant/recipient or the person signing on behalf of the prospective participant/recipient as mentioned above, to any person for influencing or attempting to influence an officer or employee of any Federal agency, a Member of Congress, an officer or employee of Congress, or an employee of a Member of Congress in connection with the awarding of any Federal contract, the making of any Federal grant, the making of any Federal loan, the entering into of any cooperative agreement, and the extension, continuation, renewal, amendment, or modification of any Federal contract, grant, loan, or cooperative agreement.
- b. If any funds other than Federal appropriated funds have been paid or will be paid to any person for influencing or attempting to influence an officer or employee of any Federal agency, a member of Congress, an officer or employee of Congress, or an employee of a Member of Congress in connection with this Federal contract, grant, loan, or cooperative agreement, or other instrument as might be applicable under Section 1352, Title 31, U. S. Code, the prospective participant/recipient shall complete and submit Standard Form-L.L.L., "Disclosure Form to Report Lobbying," in accordance with its instructions.

This certification is a material representation of fact upon which reliance was placed when this transaction was made or entered into. Submission of this certification is a prerequisite for making or entering into this transaction imposed by Section 1352, Title 31, U. S. Code. Any person who fails to file the required certification shall be subject to a civil penalty of not less than \$10,000 and not more than \$100,000 for each such failure.

The prospective participant/recipient also agrees by submitting this Federal contract, grant, loan, cooperative agreement or other instrument as might be applicable under Section 1352, Title 31, U.S. Code, that the prospective participant/recipient shall require that the language of this certification be included in all lower tier subcontracts, which exceed \$100,000 and that all such subrecipients shall certify and disclose accordingly.

RESOLUTION NO.:2022-04

**A RESOLUTION RELOCATING AND RENAMING THE VOTING PLACE FOR
VOTING PRECINCT CRANE HILL FIRE DEPARTMENT BEAT 12**

BE IT RESOLVED, by the County Commission of Cullman, Alabama as follows:

WHEREAS, that pursuant to Ala. Code § 17-6-6(a) (1975) the County Commission of Cullman, County, Alabama retains the sole authority to change the configuration, boundaries, or designation of the Voting Precincts in Cullman County, Alabama, and furthermore, any change so determined shall be adopted by resolution; and

WHEREAS, further, pursuant to Ala. Code § 17-6-4 (1975) the County Commission Cullman County, Alabama is further, authorized to designate and select a Voting Place for each Precinct; and

WHEREAS, the voting location in Beat 12 in Cullman County, Alabama is presently located at the Crane Hill Fire Department, 15123 County Road 222, Crane Hill, Alabama, 35053, more specifically described as follows:

A part of the Northeast Quarter of the Northeast Quarter of Section 16, Township 11 South, Range 5 West, and being more particularly described as follows: Begin at the Northwest Corner of said forty; thence East 378 feet to the line of L. R. Fell property, which is the true point of beginning of the property herein described; thence Southeast along the L. R. Fell property line a distance of 204 feet to the Old Jasper Road; thence Southwest along the Old Jasper Road a distance of 240 feet to Shaver Branch; thence West 165 feet along said branch to Farm-to-Marker Road No. 22; thence in a Northerly direction along the east right-of-way line of said Highway No. 22 to the true point of beginning.

Source of title: Deed Book 407, Page Number 578, Recorded in the Office of Judge of Probate, Cullman County, Alabama.

WHEREAS, the Crane Hill Fire Department is relocating the voting site to the Crane Hill Fire Department Community Building, to provide more room and better accessibility for the voters, which is located on the east side of the same property at 15023 County Road 222, Crane Hill, Alabama, 35053, more specifically described as follows:

A part of the Northeast Quarter of the Northeast Quarter of Section 16, Township 11 South, Range 5 West, and being more particularly described as follows: Begin at the Northwest Corner of said forty; thence East 378 feet to the line of L. R. Fell property, which is the true point of beginning of the property herein described; thence Southeast along the L. R. Fell property line a distance of 204 feet to the Old Jasper Road; thence Southwest along the Old Jasper Road a distance of 240 feet to Shaver Branch; thence West 165 feet along said branch to Farm-to-Marker Road No. 22; thence in a Northerly direction along the east right-of-way line of said Highway No. 22 to the true point of beginning.

Source of title: Deed Book 407, Page Number 578, Recorded in the Office of Judge of Probate, Cullman County, Alabama.

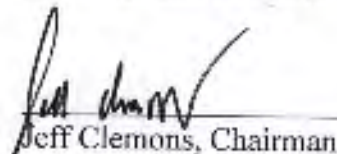
BE IT FURTHER RESOLVED AND ORDERED, that, as required by Ala. Code §17-6-1 (1975) through Ala. Code §17-6-9 (1975), the County Commission of Cullman County, Alabama, upon adoption, will file, as forwarded *via* Hand Delivery, with the Office of the Judge of Probate of Cullman County, Alabama, Office of Board of Registrars of Cullman County, Alabama, and *via* United States Postal Service Certified Mail with the Reapportionment Office of the State of Alabama a certified copy of this Resolution.

Dated this the 16th day of November, 2021.

Attest:



Tiffany Merimah,
County Clerk


Jeff Clemons, Chairman


Kerry Watson, Associate Commissioner


Garry Marchman, Associate Commissioner

State of Alabama
Cullman County

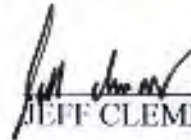
RESOLUTION NO. - 2022-05

WHEREAS, the Cullman County Commission on the basis of an engineering and traffic investigation determines that the maximum speed permitted under Article 8, Title 32, Chapter 5A, Code of Alabama, 1975 for the County Road 1286 is greater than is reasonable and safe under the conditions found to exist upon said road; it is

THEREFORE RESOLVED, that the proper maximum speed for County Road 1286 is set at 20 miles per hour at all times and no person shall operate a motor vehicle in excess of 20 miles per hour set speed on said County Road 1286;

IT IS FURTHER RESOLVED, that any violations of this Resolution shall be unlawful and punished pursuant to Title 32, Chapter 5A, Code of Alabama, 1975.

ADOPTED this the 16th day of November 2021



JEFF CLEMMONS, CHAIRMAN

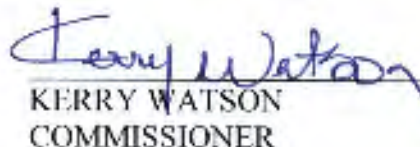


GARRY MARCHMAN
COMMISSIONER

ATTEST:



COUNTY CLERK



KERRY WATSON
COMMISSIONER

RESOLUTION # 2022-06

WHEREAS, Cullman County had applied to the State of Alabama for Recreational Trails Program (RTP) Funds to replace bridges and rehab trails at Stony Lonesome OHV Park; and

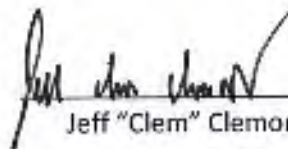
WHEREAS, Cullman County received notice from the Alabama Department of Economic and Community Affairs (ADECA) that the County's project had been selected for funding as RTP project 21-RT-55-01; and

WHEREAS, ADECA requested the County make a formal resolution accepting the offer of financial assistance and recommitting to provide the required matching share (\$275,413.38 or 43% of the total project);

NOW, THEREFORE BE IT RESOLVED, that the Cullman County Commission authorizes the Chairman to accept the offer of financial assistance in the amount of \$365,142.12 through the Recreational Trails Program for project 21-RT-55-01 for bridge replacement and trail rehabilitation at the Stony Lonesome OHV Park; and

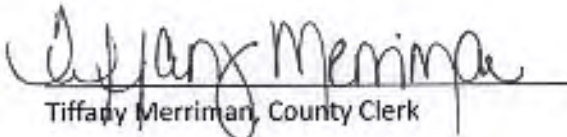
BE IT FURTHER RESOLVED, that the Cullman County Commission is committed to providing the required matching funds (\$275,413.38 or 43% of the total project cost) in a combination of cash match and in-kind services.

Adopted the 16th day of November 2021.



Jeff "Clem" Clemons, Chairman

ATTEST:



Tiffany Merriman, County Clerk

RESOLUTION # 2022-07

WHEREAS, Cullman County had applied to the State of Alabama for Recreational Trails Program (RTP) Funds to purchase trail maintenance equipment at Stony Lonesome OHV Park; and

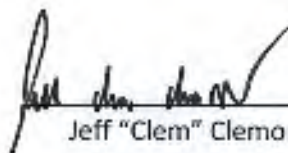
WHEREAS, Cullman County has received notice from the Alabama Department of Economic and Community Affairs (ADECA) that the County's project had been selected for funding as RTP project 21-RT-55-02; and

WHEREAS, ADECA has requested the County make a formal resolution accepting the offer of financial assistance and recommitting to provide the required matching share (\$39,948.72 or 20% of the total project cost);

NOW, THEREFORE BE IT RESOLVED, that the Cullman County Commission authorizes the Chairman to accept the offer of financial assistance in the amount of \$159,794.88 through the Recreational Trails Program for project 21-RT-55-02 to provide for the purchase of trail maintenance equipment for Stony Lonesome OHV Park; and

BE IT FURTHER RESOLVED, that the Cullman County Commission is committed to providing the required matching funds in local cash match in the amount of \$39,948.72 or 20% of the total project cost.

Adopted the 16th day of November 2021.



Jeff "Clem" Clemons, Chairman

ATTEST:



Tiffany Merriman, County Clerk

KAY IVEY
GOVERNOR



STATE OF ALABAMA

KENNETH W. BOSWELL
DIRECTOR

March 27, 2023

The Honorable Jeff Clemons
Chairman of the Cullman County Commission
500 Second Avenue SW, Room 105
Cullman, Alabama 35055-0205

Re: Recreational Trails Program (RTP)
Project 21-RT-55-02 – Stony Lonesome OHV Park Maintenance Equipment
Final Inspection Report

Dear Chairman Clemons:

On February 21, 2023, Ms. LaToya Edwards received photographs verifying the completion of the above referenced project. The information contained in this report is based on that documentation.

Project Details

Date Approved	Expiration Date	Date Inspected	Grant Amount	Final Evaluation	Close Project	Inspected By
09/24/2021	05/31/2023	02/21/2023	\$159,794.88	Excellent	Yes	LaToya Edwards

Final Inspection Results

Yes No N/A

- The project was completed in accordance with the project agreement.
- The quality of the site and/or the development is satisfactory.
- There were no safety hazards observed at the park.
- The required RTP acknowledgement signs and/or civil rights non-discrimination signs are displayed.

The Honorable Jeff Clemons

Page 2

March 27, 2023

- The facilities are accessible to the physically handicapped.
- The natural features of the site are adequately protected.
- There are no overhead utilities within the project boundaries.
- The site is being used for recreational purposes only.
- The hours of park operation are reasonable.
- The user fee schedule complies with RTP requirements.
- The project is in substantial compliance with RTP regulations and no major deficiencies were observed.

Final Inspection Comments

A condition of the RTP funding is that grant recipients develop, operate, and maintain RTP assisted facilities and equipment in accord with federal and state regulations. As of the date of the inspection, the Stony Lonesome OHV Park Maintenance Equipment Project is in substantial compliance with state and federal regulations. Therefore, the Cullman County Commission should be commended on the satisfactory completion of this project.

If you have any questions regarding your RTP project, please contact Ms. Edwards, Programs Manager, at (334) 242-5382.

Sincerely,



Crystal G. Talley, Division Chief
Federal Initiatives and Recreation Division

CGT:LE:km

cc: ADECA Financial Services

Ms. Tiffany Green-Oldacre, Grant Specialist, NARCOG

Mr. Bradley Williams, Director, Cullman County Economic Development



Prepared For: Cullman County, AL

Date 10/22/2021
AE/AM WCB

Unit #
Year 2022 Make Ford Model F-150
Series XL 4x4 SuperCrew Cab 5.5 ft. box 145 in WB

Vehicle Order Type Ordered Term 24 State AL Customer# 614574

\$ 39,528.00	Capitalized Price of Vehicle ¹
\$ 0.00 *	Sales Tax <u>0.0000%</u> State <u>AL</u>
\$ 0.00 *	Initial License Fee
\$ 0.00 *	Registration Fee
\$ 350.00	Other: Courtesy Delivery Fee
\$ 0.00	Capitalized Price Reduction
\$ 0.00	Tax on Capitalized Price Reduction
\$ 0.00	Gain Applied From Prior Unit
\$ 0.00 *	Tax on Gain On Prior
\$ 0.00 *	Security Deposit
\$ 0.00 *	Tax on Incentive (Taxable Incentive Total : \$0.00)

All language and acknowledgments contained in the signed quote apply to all vehicles that are ordered under this signed quote.

Order Information

Driver Name
Exterior Color (0 P) Oxford White
Interior Color (0 I) Black w/Medium Dark Slate w/Vinyl 40/20
Lic. Plate Type Government
GVWR 0

6 trucks will be built to these exact specs... initial below.

\$ 39,878.00	Total Capitalized Amount (Delivered Price)
\$ 837.40	Depreciation Reserve @ <u>2.1000%</u>
\$ 145.10	Monthly Lease Charge (Based on Interest Rate - Subject to a Floor) ²
\$ 982.50	Total Monthly Rental Excluding Additional Services

x6

Initial: SC

Additional Fleet Management

\$ 0.00	Master Policy Enrollment Fees
\$ 0.00	Commercial Automobile Liability Enrollment
	Liability Limit <u>\$0.00</u>
\$ 0.00	Physical Damage Management
\$ 0.00	Full Maintenance Program ³ Contract Miles <u>0</u>
	Incl: # Brake Sets (1 set = 1 Axle) <u>0</u>

Comp/Coil Deductible	<u>0 / 0</u>
OverMileage Charge	<u>\$ 0.00 Per Mile</u>
# Tires <u>0</u>	Loaner Vehicle Not Included

\$ 0.00	Additional Services SubTotal
\$ 0.00	Lease/Rental Tax <u>3.0000%</u>
\$ 982.50	Total Monthly Rental Including Additional Services
\$ 19,778.40	Reduced Book Value at <u>24</u> Months
\$ 400.00	Service Charge Due at Lease Termination

State AL

Quote based on estimated annual mileage of 15,000
(Current market and vehicle conditions may also affect value of vehicle)
(Quote is Subject to Customer's Credit Approval)
Notes

Enterprise FM Trust will be the owner of the vehicle covered by this Quote. Enterprise FM Trust (not Enterprise Fleet Management) will be the Lessor of such vehicle under the Master Open - End (Equity) Lease Agreement and shall have all rights and obligations of the Lessor under the Master Open - End (Equity) Lease Agreement with respect to such vehicle. Lessee must maintain insurance coverage on the vehicle as set forth in Section 11 of the Master Open-End (Equity) Lease Agreement until the vehicle is sold.

ALL TAX AND LICENSE FEES TO BE BILLED TO LESSEE AS THEY OCCUR.

Lessee hereby authorizes this vehicle order, agrees to lease the vehicle on the terms set forth herein and in the Master Equity Lease Agreement and agrees that Lessor shall have the right to collect damages in the event Lessee fails or refuses to accept delivery of the ordered vehicle. Lessee certifies that it intends that more than 60% of the use of the vehicle is to be in a trade or business of the Lessee.

LESSEE Cullman County, AL
BY [Signature]

TITLE

DATE

¹ INDICATES ITEMS TO BE BILLED ON DELIVERY.
² Capitalized Price of Vehicle May be Adjusted to Reflect Final Manufacturer's Invoice. Lessee Hereby Assigns to Lessor any Manufacturer Rebates And/Or Manufacturer Incentives Intended for the Lessee, Which Rebates And/Or Incentives Have Been Used by Lessor to Reduce the Capitalized Price of the Vehicle.
³ Monthly Lease Charge Will Be Adjusted to Reflect the Interest Rate on the Delivery Date (Subject to a Floor).
⁴ The inclusion herein of references to maintenance fees/services are solely for the administrative convenience of Lessee. Notwithstanding the inclusion of such references in this (Invoice/Schedule/Quote), all such maintenance services are to be performed by Enterprise Fleet Management, Inc., and all such maintenance fees are payable by Lessee solely for the account of Enterprise Fleet Management, Inc., pursuant to that certain separate (Maintenance Agreement) entered into by and between Lessee and Enterprise Fleet Management, Inc., provided that such maintenance fees are being billed by Enterprise FM Trust, and are payable at the direction of Enterprise FM Trust, solely as an authorized agent for collection on behalf of Enterprise Fleet Management, Inc.

VEHICLE INFORMATION:

2022 Ford F-150 XL 4x4 SuperCrew Cab 5.5 ft. box 145 in. WB - US
 Series ID: W1E

Initial: JK

Pricing Summary:

	INVOICE	MSRP
Base Vehicle	\$39,021	\$40,860.00
Total Options	\$0.00	\$0.00
Destination Charge	\$1,695.00	\$1,695.00
Total Price	\$40,716.00	\$42,555.00

SELECTED COLOR:

Exterior: YZ-(0 P) Oxford White
 Interior: AS-(0 I) Black w/Medium Dark Slate w/Vinyl 40/20/40 Front Seat

SELECTED OPTIONS:

CODE	DESCRIPTION	INVOICE	MSRP
100A	Equipment Group 100A Standard	NC	NC
145WB	145" Wheelbase	STD	STD
425	50 State Emissions	NC	NC
44G	Transmission: Electronic 10-Speed Automatic	Included	Included
64C	Wheels: 17" Silver Steel	Included	Included
99B	Engine: 3.3L V6 PFDI	Included	Included
A	Vinyl 40/20/40 Front Seat	NC	NC
AS_02	(0 I) Black w/Medium Dark Slate w/Vinyl 40/20/40 Front Seat	NC	NC
PAINT	Monotone Paint Application	STD	STD
STDGV	GVWR: 6,470 lbs Payload Package	Included	Included
STDRD	Radio: AM/FM Stereo w/8 Speakers	Included	Included
STDTR	Tires: 285/70R17 BSW A/T	Included	Included
SYNC	SYNC 4	Included	Included
X26	3.73 Axle Ratio	Included	Included
YZ_01	(0 P) Oxford White	NC	NC

CONFIGURED FEATURES:

Initial: JL

Body Exterior Features:

Number Of Doors: 4
Rear Cargo Door Type: tailgate
Driver And Passenger Mirror: power remote manual folding side-view door mirrors
Convex Driver Mirror: convex driver and passenger mirror
Door Handles: black
Front And Rear Bumpers: black front and rear bumpers with body-coloured rub strip
Rear Step Bumper: rear step bumper
Front Tow Hooks: 2 front tow hooks
Box Style: regular
Body Material: aluminum body material
: trallering with harness
Grille: black grille

Convenience Features:

Air Conditioning: manual air conditioning
Power Windows: power windows with driver and passenger 1-touch down
Remote Keyless Entry: keyfob (all doors) remote keyless entry
Illuminated Entry: illuminated entry
Integrated Key Remote: integrated key/remote
Auto Locking: auto-locking doors
Remote Engine Start: remote engine start - smart device only
Steering Wheel: steering wheel with manual tilting, manual telescoping
Day-Night Rearview Mirror: day-night rearview mirror
Emergency SOS: SYNC 4 911 Assist emergency communication system
Front Cupholder: front and rear cupholders
Overhead Console: full overhead console with storage
Glove Box: locking glove box
Driver Door Bin: driver and passenger door bins
Rear Door Bins: rear door bins
Dashboard Storage: dashboard storage
IP Storage: bin instrument-panel storage
Retained Accessory Power: retained accessory power
Power Accessory Outlet: 1 12V DC power outlet

Entertainment Features:

radio: AM/FM stereo with seek-scan
Radio Data System: radio data system
Voice Activated Radio: voice activated radio
Speed Sensitive Volume: speed-sensitive volume
Steering Wheel Radio Controls: steering-wheel mounted audio controls
Speakers: 6 speakers
Internet Access: FordPass Connect 4G internet access
1st Row LCD: 2 1st row LCD monitor
Wireless Connectivity: wireless phone connectivity
Antenna: fixed antenna

Lighting, Visibility and Instrumentation Features:

Headlamp Type: delay-off aero-composite halogen headlamps
Auto-Dimming Headlights: Ford Co-Pilot360 - Auto High Beam auto high-beam headlights
Cab Clearance Lights: cargo bed light
Front Wipers: variable intermittent wipers
Tinted Windows: light-tinted windows
Dome Light: dome light with fade
Front Reading Lights: front reading lights
Variable IP Lighting: variable instrument panel lighting
Display Type: analog appearance
Tachometer: tachometer
Voltmeter: voltmeter

Initial: JC

Compass: compass
Exterior Temp: outside-temperature display
Low Tire Pressure Warning: tire specific low-tire-pressure warning
Trip Odometer: trip odometer
Lane Departure Warning: lane departure
Front Pedestrian Braking: pedestrian detection
Forward Collision Alert: forward collision
Oil Pressure Gauge: oil pressure gauge
Water Temp Gauge: water temp. gauge
Transmission Oil Temp Gauge: transmission oil temp. gauge
Clock: in-radio display clock
Rear Vision Camera: rear vision camera
Oil Pressure Warning: oil-pressure warning
Water Temp Warning: water-temp. warning
Battery Warning: battery warning
Lights On Warning: lights-on warning
Key in Ignition Warning: key-in-ignition warning
Low Fuel Warning: low-fuel warning
Door Ajar Warning: door-ajar warning
Brake Fluid Warning: brake-fluid warning

Safety And Security:

ABS four-wheel ABS brakes
Number of ABS Channels: 4 ABS channels
Brake Assistance: brake assist
Brake Type: four-wheel disc brakes
Vented Disc Brakes: front and rear ventilated disc brakes
Daytime Running Lights: daytime running lights
Spare Tire Type: full-size spare tire
Spare Tire Mount: underbody mounted spare tire w/crankdown
Driver Front Impact Airbag: driver and passenger front-impact airbags
Driver Side Airbag: seat-mounted driver and passenger side-impact airbags
Overhead Airbag: Safety Canopy System curtain 1st and 2nd row overhead airbag
Occupancy Sensor: front passenger airbag occupancy sensor
Height Adjustable Seatbelts: height adjustable front seatbelts
Seatbelt Pretensioners: front seatbelt pre-tensioners
3Point Rear Centre Seatbelt: 3 point rear centre seatbelt
Side Impact Bars: side-impact bars
Perimeter Under Vehicle Lights: remote activated perimeter/approach lights
Tailgate/Rear Door Lock Type: tailgate/rear door lock included with power door locks
Rear Child Safety Locks: rear child safety locks
Ignition Disable: SecurLock immobilizer
Security System: security system
Panic Alarm: panic alarm
Electronic Stability: electronic stability stability control with anti-roll
Traction Control: ABS and driveline traction control
Front and Rear Headrests: manual adjustable front head restraints
Rear Headrest Control: 3 rear head restraints

Seats And Trim:

Seating Capacity max. seating capacity of 6
Front Bucket Seats: front split-bench 40-20-40 seats
Number of Driver Seat Adjustments: 4-way driver and passenger seat adjustments
Reclining Driver Seat: manual reclining driver and passenger seats
Driver Fore/Aft: manual driver and passenger fore/aft adjustment
Front Centre Armrest Storage: front centre armrest
Rear Seat Type: rear 60-40 split-bench seat
Rear Folding Position: rear seat fold-up cushion
Leather Upholstery: vinyl front and rear seat upholstery
Headliner Material: full cloth headliner
Floor Covering: full vinyl/rubber floor covering

Cabback Insulator: cabback insulator
Shift Knob Trim: urethane shift knob
Interior Accents: metal-look interior accents

Initial: JC

Standard Engine:

Engine 290-hp, 3.3-liter V-6 (regular gas)

Standard Transmission:

Transmission 10-speed automatic w/ OD and PowerShift automatic

187 Cardinal Ridge Ln
 Dobson, N.C. 27017
 www.carolinacarports.com



Order Changes 1-888-551-2156
 Scheduling 1-800-670-4262
 Contract by Amanca

DEALER	Bulldog Steel Structures	Sales Rep and Direct Line	Frank Rangel 336-355-5804		Date	10/12/2021	
CUSTOMER NAME	Cullman County - Jeff Clemmons / Shane Bailey		COUNTY	Cullman	TAX	(Where Delivered)	9.00%
PHY ADDRESS	1501 Sportsman Lake Road NW		CITY	Cullman	STATE	AL	ZIP 35053
PHONE: MOBILE	256-775-1942	HOME			OTHER		
ROOF STYLE	Regular <input type="checkbox"/>	Box Eave <input type="checkbox"/>	Vertical <input checked="" type="checkbox"/>	GAUGE	14 <input checked="" type="checkbox"/>	12 <input type="checkbox"/>	
UNIT SIZE	W 32	L 46	HI 14	POWER AVAILABLE	Yes <input checked="" type="checkbox"/>	No <input type="checkbox"/>	
COLOR	Top Sandstone	Sides/Ends Sandstone	Trim Tan	Wainscot	UNCERTIFIED <input type="checkbox"/>	CERTIFIED <input checked="" type="checkbox"/>	
SURFACE TYPE	<input type="checkbox"/> Cement	<input checked="" type="checkbox"/> Ground	<input type="checkbox"/> Asphalt	<input type="checkbox"/> Wood	<input type="checkbox"/> Other		
BARN STYLE	<input checked="" type="checkbox"/> N/A	<input type="checkbox"/> Carolina	<input type="checkbox"/> Seneca	<input type="checkbox"/> Horse	Colored Screws	<input type="checkbox"/> Yes	<input type="checkbox"/> No

NOTE: ROOF IS 1 FT. LONGER THAN THE FRAME

Qty	Item	Notes	Price	All Orders C.O.D.	
1	32'x46' Base	Vertical Roof	\$15,195.00	Price	\$32,085.00
1	Certification	140 MPH - 30 PSF	\$0.00	Tax	
1	14 Gauge		\$0.00	9.00%	\$2,887.65
1	14' Side Height		\$3,685.00	Subtotal	\$34,972.65
2	Sides Closed	Vertically	\$3,515.00		
2	Ends Closed	Vertically	\$6,590.00		
2	Garage Doors	12'x12' Installed on the End	\$2,800.00		\$0.00
1	Walk In Door	36"x80" NO Window	\$300.00	20% Down Payment Before Tax	
				Any order over \$15,000 requires a 50% payment of the balance due at the time of scheduling	
		** Telescopic Forklift Required **		Total	\$34,972.65
		*** Generic Blueprints ***			\$963.00
		CCI to fill out E-Verify		Additional Labor Charge	
		DC No requirements for Installation Crew			\$3,208.50
				Manufacturing Surcharge 10%	
					\$39,144.15
				Balance Due at Installation	
				Payment Options:	Cash <input type="checkbox"/>
				Check <input type="checkbox"/>	M.O. <input type="checkbox"/>
					P.O. <input type="checkbox"/>
					C.C. (with 2% processing fee) <input type="checkbox"/>

Window, Door, and/or opening placements on attached drawing.

Notes:

*BSS did not collect a Down Payment. Balance is due in full to Carolina Carports Inc. (PO made out to Carolinn Carports - will need copy)

BINDING PURCHASE CONTRACT

LOT MUST BE LEVEL PRIOR TO INSTALLATION

CHECK WITH YOUR COUNTY/CITY TO SEE IF YOU NEED A ZONING AND/OR BUILDING PERMIT

This purchase agreement (the "Agreement") is made by and between Carolina Carports, Inc. ("CCI"), a North

Cullman County - Jeff Clemmons /

Carolina corporation, and Shane Bailey (the "Buyer"). Buyer agrees to buy, and CCI agrees to sell, pursuant to the terms listed in this Agreement, the item described above. Buyer has read and understand the terms of this Agreement, including the terms and conditions contained on the reverse side of this document and agrees to be bound by the same.

Customer: Jeff "Clem" Clemmons

CCI: Bulldog Steel Structures

Email: tmerriman@co.cullman.al.us

Site Will Be Level Int. DC

By: Frank Rangel 336-355-5804

THANK YOU FOR CHOOSING CAROLINA CARPORTS INC.

Terms, Conditions, and Warranties

1. **Products and Warranties.** Buyer has been educated about CCI's various products and warranties, including without limitation the following
 - a. **Standard (Uncertified) Unit.** The Standard (Uncertified) Unit is built according to CCI specifications and are not wind/snow load rated.
 - b. **Certified Unit.** Certified Units are built according to an engineer blueprint and are wind/snow load rated.
2. **Warranty Limitations.**
 - a. **Uneven Installation Site Voids Warranty.** Warranties shall be immediately void if the foundation is not level prior to installation. Units installed on an installation site that is not level may be installed "as is."
 - b. **Modification of Structure Voids Warranty.** Warranties shall be immediately void if buyer alters the unit in any manner.
 - c. **Basement Leaks.** CCI does not seal under the base of the unit and is not responsible for leaks under the basement.
3. **Pricing Terms.**
 - a. **Price Subject to Change.** CCI's prices are subject to change without notice.
 - b. **Additional Charges.**
 - i. **Labor Charge.** Buyer will pay an additional labor charge of not less than fifty dollars (\$50.00) if the installation contractor is required to dig, level, carry installation materials further than a reasonable distance or install the unit on any wall, dock, or over any existing structure.
 - ii. **Service Charge.** Buyer will pay a service charge of not less than two hundred dollars (\$200.00) if the installation contractor must return to install an addition to an existing unit or if unit must be re-shipped due to customer error, uneven jobsite or other similar issue.
 - iii. **Taxes and Fees.** Buyer agrees to pay all applicable sales or other taxes, unless exempt therefrom.
 - iv. **Right to Correct.** CCI shall have the right to correct any pricing or tax errors made by dealer. Prices for orders placed on hold will only be guaranteed for a 90 calendar day period. If an order is on hold for more than 90 days, customer may be subject to a price increase that equals CCI's current pricing at the time of delivery/installation.
4. **Payment Terms.**
 - a. **Down Payment.** Buyer shall pay dealer a down payment equal to 20% of the retail price at the time of the sale. Buyer shall not pay dealer an amount exceeding the down payment. Buyer does so at his own risk with the understanding that Buyer is contractually obligated to remit payment of the remaining balance of the purchase price (the "Balance") as set forth below.
 - b. **Balance.** Buyer shall pay the balance to the installation contractor on the date of installation. Payment may be made by check or credit card. Payments made by credit card are subject to an additional fee equal to two percent (2%) of the balance paid by credit card.
 - c. **Excess Down Payment.** If Buyer pays more than the required Down Payment at the time of the sale, CCI must receive these funds from the Dealer prior to installation or CCI will not schedule installation.
 - d. **No Refunds.** In the event Buyer cancels the order, Buyer shall receive no refund of the down payment.
 - e. **Security Interest.** Buyer expressly agrees that the unit shall remain property of CCI until the purchase price under the agreement is paid in full.
CCI hereby retains a purchase money security interest in the unit as set forth in Section 9 of the Uniform Commercial Code as enacted in the state where unit is being installed. Failure to pay the purchase price under the agreement will result in repossession of unit. Repossession does not relieve Buyer from liability for specific performance of the agreement.
5. **Delivery and Installation: Limitation on Liability.**
 - a. **Delayed Delivery.** CCI is not responsible for changes in delivery dates caused by circumstances out of CCI's control, including but not limited to inclement weather conditions, installation contractor running behind, accidents, and acts of God.
 - b. **Buyer Responsible for Locating Underground Utilities.** Buyer is responsible for informing installation contractors of any underground cables, gas lines, utility hazards, or relevant matters prior to installation. This may require Buyer to contact the utility company to request that the locations of the Underground Utilities be marked. Buyer agrees to indemnify and hold CCI harmless for any damage done to submerged lines, pipes, cables, or other utility instrumentalities during installation.
 - c. **Buyer Responsible for Permits.** Buyer shall be solely responsible for, and shall obtain, any necessary city or county permits prior to commencement of installation. Buyer agrees to indemnify and hold CCI harmless for violation of any city or county ordinance or code.
 - d. **Limitation on Liability.** CCI will not be liable to Buyer for punitive, indirect, incidental, special, or consequential damages resulting from any defect or deficiencies in accepted items.
6. **Jurisdiction and Venue.** The parties hereto: (i) consent to submit itself to the personal jurisdiction of any state or federal court sitting in the County of Surry, State of North Carolina, in any action or proceeding arising out of or relating to this Agreement, (ii) agree that all claims in respect of such action or proceeding may be heard and determined in any such court, (iii) agree that they shall not attempt to deny or defeat such personal jurisdiction by motion or other request for leave from any such court, and (iv) agree not to bring any action or proceeding arising out of or relating to this Agreement in any other court. Each of the parties here to waives any defense of inconvenient forum to the maintenance of any action or proceeding so brought and waives any bond, surety or other security that might be required of the other party with respect thereto.
7. **Governing Law.** This Agreement shall be interpreted and construed according to, and governed by, the laws of the State of North Carolina.
8. **Cumulative Remedies.** The rights and remedies under this Agreement are cumulative and are in addition to and not in substitution for any other rights and remedies available at law or in equity or otherwise.
9. **Entire Agreement.** The parties agree that this Agreement is the complete and exclusive statement of the agreement between the parties, and supersedes all prior written or oral communications, representations and agreements relating to the subject matter of this agreement.
10. **Modification.** The terms of this Agreement, save and except the price term in the event of a pricing error/change order, may be modified or amended only by a written instrument executed by the parties hereto.
11. **Waiver; Enforceability.** The waiver by any party of a breach or a default of any provision of this Agreement by the other party shall not be construed as a waiver of any succeeding breach of the same or any other provision, nor shall any delay or omission on the part of any party to exercise or avail itself of any right, power or privilege that it has, or may have hereunder, operate as a waiver of any right, power or privilege by such party. If one or more provisions of this Agreement are held to be illegal or unenforceable under applicable law, such illegal or unenforceable portion shall be limited or excluded to the minimum extent required so that this Agreement shall otherwise remain in full force and effect and enforceable.
12. **Survival.** Provisions of this Agreement which by their nature should apply beyond their terms will remain in force after any termination or expiration of this Agreement including, but not limited to, the following provisions: Warranties, Indemnification, Governing Law, and Survival.
13. **Attorney's Fees.** If CCI hires an attorney to collect what you owe, you will pay attorney's fees and court costs as the law allows. The maximum attorney's fees you will pay will be 15% of the amount you owe.

Customer: # Jeff "Clem" Clemmons Date: Nov 17 2021 16:35 EST

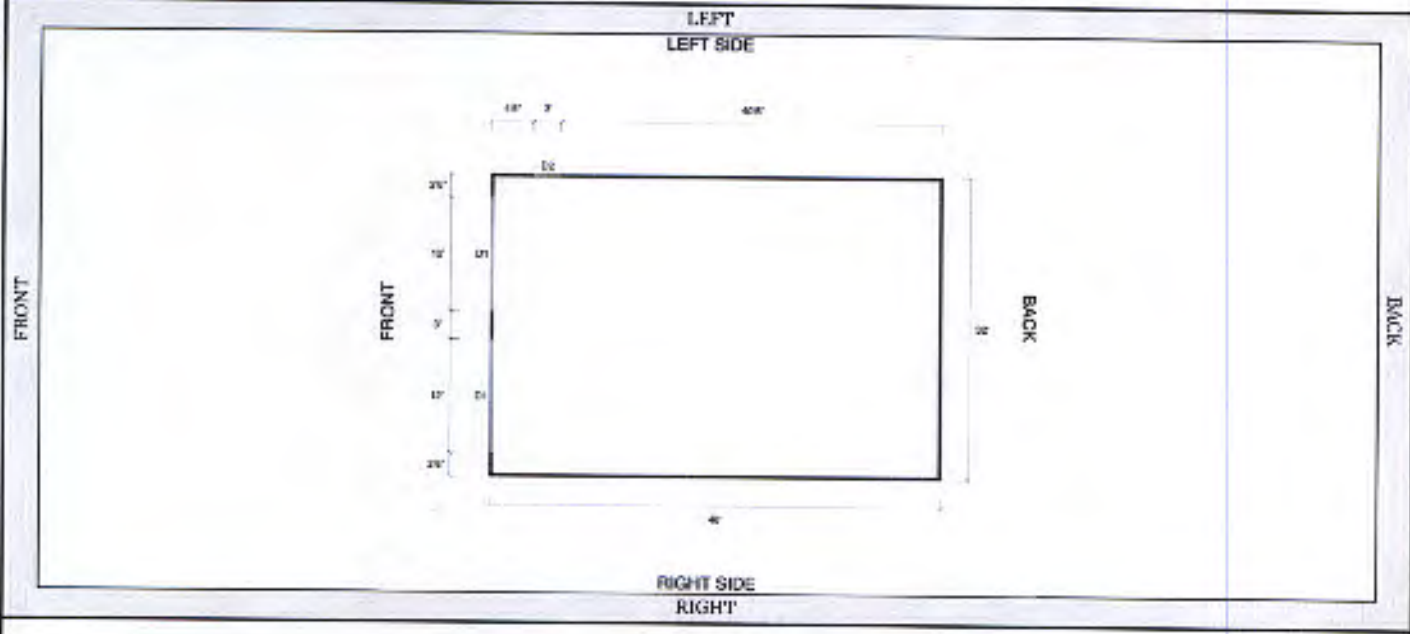


BUILDING DESIGN SPECIFICATIONS

Customer Name: Jeff Clemmons - Chairman of Cullman County Sales Rep: Frank Rangel 336-355-5804 Manufacturer: Carolina Carports
 PHY ADDRESS: 1501 Sportsman Lake Road NW CITY: Cullman STATE: AL ZIP: 35055
 PHONE: Mobile: 256-775-1942 Home: _____ Email: tnerriman@co.cullman.al.us

Size:	Width	32	Length	47	Baserail	46	Height	14	Barn:	N/A
Colors:	Roof	Sandstone	Sides	Sandstone	Ends	Sandstone	Trim	Tan	Wainscot	N/A

ROOF STYLE:	<input type="checkbox"/> REGULAR	<input type="checkbox"/> BOXED EVE	<input checked="" type="checkbox"/> VERTICAL
SIDE AND END PANEL ORIENTATION:	<input type="checkbox"/> HORIZONTAL	<input checked="" type="checkbox"/> VERTICAL	<input type="checkbox"/> LAP SIDING



Front



Back



LEFT



RIGHT

X Jeff "Clem" Clemmons
 Customer Signature

Nov 17 2021 16:35 EST
 Date



CAROLINA CARPORTS, INC

Carports - Garages - Barns - RV Covers - All Certified 30' - 60' wifes
Corporate Office: 187 Cardinal Ridge Trail, Dobson NC 27017
800-670-4262 - www.carolinacarports.com

32' Wide - 60' Wide Building Requirements

- Customer must pay 1/2 of the balance at the time CCI calls to schedule delivery, prior to installation.
Exceptions may be made for P.O.'s.
- Customer is responsible for inquiring about local city and county requirements for their structure, foundation, etc.
- If site specific drawings are required, the customer will be responsible for the engineering fees. Engineering fees vary based on the size of the structure.
- Lift Requirements:
 - On site by 7am the morning of delivery. Charges may apply for delays.
 - Telescopic Forklift
 - 20' Reach - 40' Reach (Dependent on the Height of Structure)
 - 6000 lbs. Capacity Minimum



- Drawing must be submitted showing the specific placement of all doors, windows or openings with the customer's signature.
- A complimentary site check will be completed approximately 2 weeks after the customer's foundation is ready. If an area requires a secondary site check, charges will apply.
- Additional charges will apply if the customer makes changes to the structure after the site check is completed and production begins.
- In the event the customer delays delivery after production is complete, storage fees may be applied.
- A freight charge may be applicable depending on the size of the structure.

Jeff "Clem" Clemons

Jeff Clemons - Chairman of Cullman County

Nov 17 2021 16:35 EST

Date

1501 Sportsman Lake Road NW

Address

Cullman

City

AL

State

35055

Zip

Cullman

County

Bulldog Steel Structures Terms, Conditions, and Warranties

1) Payment

- a. Quotes are valid for 30 calendar days after above-printed date.
- b. Buyer must pay a down payment of 20% for dealer services received from Bulldog Steel Structures.
 - i. The down payment is non-refundable.
 - ii. Any refund request will be evaluated on a case by case basis. In the event that Bulldog Steel Structures determines that extenuating circumstances, i.e. permitting issues or zoning issues; that would allow for a refund, the buyer agrees that a processing fee equivalent to 5% of the retail cost of the structure, will be retained by Bulldog Steel Structures for dealer services rendered.
- c. Bulldog Steel Structures reserves the right to correct pricing in case of an error.
- d. Pricing is determined by the manufacturer (hereafter "the manufacturer"). Bulldog Steel Structures is not responsible for structure pricing.
 - i. Right to Correct. The Manufacturer shall have the right to correct any pricing or tax errors made by Bulldog Steel Structures. If an order is placed on hold, the customer may be subject to a price increase that equals the manufacturer's current pricing at the time of delivery/installation.
 - ii. Bulldog Steel Structures will attach tax exemption documents with Buyer's order, however it is not at Bulldog Steel Structure's discretion if documentation is acceptable for said purchases. Buyer understands that they are responsible to keep records to verify eligibility for the exemption(s) claimed and that they may be required to pay sales tax on purchases that do not qualify for the exemption(s) as per documentation.
- e. In the event that the foundation is unlevel, out of square, inaccessible or for any reason is not conducive to installation, no refund will be issued.
- f. Rent-to-Own and financing options are handled by a third party. The buyer will deal directly with the third party in order to manage their financing or Rent-to-Own payment agreement.

2) Installation

- a. Bulldog Steel Structures is not responsible for installation, installation dates or the actions of the contractor.
 - i. Lead times are estimated and weather permitting as set forth by the manufacturer.
 - ii. Lead times set forth by the manufacturer will commence once site and permit, if applicable, are ready and/or completed.
 - iii. Lead times set forth by the manufacturer may vary from initial order date to ready date.
- b. The buyer is responsible for foundation work. If foundation work is not complete by the install date, Bulldog Steel Structures is not responsible for any delays and/or return trip fees.
- c. Labor cost is determined solely by the independent contractor. Any labor fee assessed by Bulldog Steel Structures is an estimate.

3) Miscellaneous

- a. Warranties and workmanship guarantees are provided and determined by the manufacturer, not Bulldog Steel Structures.
- b. Certified drawings are available from the manufacturer when required.
- c. Average lead times are estimates provided and determined by the manufacturer.
- d. Buyer is responsible for building permits.
- e. Bulldog Steel Structures is not responsible for changes in delivery dates caused by circumstances out of Bulldog Steel Structure's or the manufacturer's control, including but not limited to inclement weather conditions, installation contractor running behind, accidents, material shortages and acts of God.

Customer x Jeff "Clem" Clemens

Date: x Nov 17 2021 16:35 EST



Thank you for your order through Bulldog Steel Structures! Please review the next steps and additional information provided below; if you would like to make any changes to your current order or place an addition order in the future, please contact us back via email or at 1-888-551-2156.

What to expect next

- * Your order will be sent to **Carolina Carports, Inc.** reachable at **1-800-670-4262** they are the manufacturer that will service your order and complete your installation process.
- * The manufacturer will begin to process your order for scheduling and installation.
- * Any order \$5000 and up, will require site pictures to be provided to manufacturer prior to scheduling.
- * Units 32'-60' wide will have a site inspection prior to installation and will require lift to be provided on site during installation. (Manufacturer will contact you about this process)
- * Units with 15'-16' side height will require lift to be provided on site
- * In case you are not yet ready for installation, please keep in mind you will need to contact the manufacturer and notify them once your foundation and permit (if applicable) are ready.
- * Your lead time begins once you are noted as being ready for installation.
- * The manufacturer will contact you to verify the building information and installation date. In the event they leave you a voicemail, please reach back out to them as soon as possible to avoid scheduling delays.
 - * Keep in mind that Bulldog Steel Structures is not responsible for blueprints, installation, installation dates, installation delays, or the actions of the contractor.
- * If you have any questions or need any scheduling updates you can contact the manufacturer directly at the number noted above, if you need any further assistance you can always contact us.

Additional foundation information

- * Additional labor fees may be applied if your site is not level, square, and cleared prior to the install date.
- * Your cement must be level, square, the correct size, and poured as per city/county codes if applicable.
- * Your gravel or dirt foundation must be ground level. You can build it up, however, you will need to have the gravel/dirt compacted and may even need a retaining wall to keep gravel/dirt from washing out.
 - * Keep in mind if it is not compacted properly this will allow anchors to move and may cause your building to shift.
- * Installation on a wooden foundation will need to be pre-approved by the manufacturer and may depend on your state, city, or county codes if applicable.
- * The crew will require a minimum of 3' of clear and level workspace around the unit, additional fees may apply otherwise.
- * The crew must be able to park their truck and trailer within a reasonable distance of the installation site. If they are required to carry the material more than a reasonable distance, as determined by the manufacturer, a labor charge may be added to your final price, or the crew may decline to complete the installation.
- * Changes to the order can be made until the time of scheduling; once the order has been scheduled, additional fees will apply and the installation date may be changed.
- * Customer is responsible to call and have any underground lines marked; this process normally takes up to 72 hours, but it can vary depending on your area. Bulldog Steel Structures, the manufacturer, nor the crew will be held responsible for damages made due to unmarked lines.
- * The installation area must be clear of overhead power lines and trees/branches.

Jeff Clemmons - Chairman of Cullman County

Customer Printed Name

1501 Sportsman Lake Road NW

Street Address

Cullman

City

AL

State

35055

Zip Code

x Jeff "Clem" Clemmons

Customer Signature

x Nov 17 2021 16:35 EST

Date



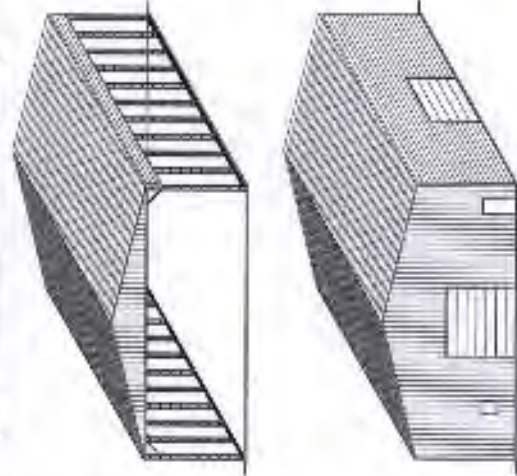
CAROLINA CARPORTS INC.
 P.O. BOX 1263
 DOBSON, NC 27017
 TOLL FREE 1-800-870-4262
 LOCAL 336-367-6400
 FAX 336-367-6410

This document is the property of Carolina Carports, Inc. Use of these plans without the permission of Carolina Carports is prohibited.

STANDARD BUILDING DETAILS 40 ft SPAN

LIGHT FRAME CONSTRUCTION

NOTE: USE $\odot 2\frac{1}{2}$ " x $\frac{3}{8}$ " 14 Ga.
 $\odot 2\frac{1}{2}$ " x $\frac{3}{8}$ " 12 Ga.
 STEEL TUBE FOR ALL FRAME AND BASE
 RAIL MEMBERS UNLESS OTHERWISE SHOWN.



CONCRETE FOUNDATION DESIGN RECOMMENDATIONS:
 CONCRETE INFORMATION AND DETAILS SHOW IN THESE PLANS ARE FOR INFORMATION ONLY. THE CONTRACTOR SHALL BE RESPONSIBLE FOR OBTAINING ALL NECESSARY PERMITS AND REGULATIONS AND FOR PROVIDING A SUFFICIENT FOUNDATION FOR THE PROPOSED STRUCTURE AND COMPLYING WITH ALL LOCAL, STATE AND FEDERAL REQUIREMENTS WITH THE LOCAL BUILDING CODE OFFICES.

CONCRETE SHALL HAVE A MINIMUM SPECIFIED COMPRESSIVE STRENGTH OF 3000 PSI AT 28 DAYS OR AS REQUIRED BY LOCAL BUILDING CODE. THE USE OF HEAVY STRENGTH CONCRETE IS ACCEPTABLE.

STEEL TUBE REINFORCING STEEL SHALL BE A MINIMUM OF 1/2" DIA. WITH A MINIMUM OF 4 REINFORCING STEEL BARS PERMITS TO BE USED FOR THE CONCRETE. THE REINFORCING STEEL SHALL BE MEDIUM GRADE 40. THE USE OF HEAVY REINFORCING CONCRETE (HRC) IS ALLOWED WHERE PERMITTED BY LOCAL BUILDING CODE OFFICES.

REINFORCING STEEL SHALL BE MEDIUM GRADE 40. THE USE OF HEAVY REINFORCING CONCRETE (HRC) IS ALLOWED WHERE PERMITTED BY LOCAL BUILDING CODE OFFICES.

TABLE 1
 ROW/RAFTER FRAME, END POST, GROUND ANCHOR AND PANEL FASTENER SPACING SPECIFICATIONS

WIND EXPOSURE CATEGORY	ULTIMATE WIND SPEED (MPH)	MINIMUM WIND SPEED (MPH)	MAXIMUM WIND SPEED (MPH)	AVERAGE FASTENER SPACING ON ROW/RAFTER FRAME AND PANELS OR OTHER (INCHES)	WIND PANELS SPACING
B or C	100 TO 140	80 TO 108	30	4.0'	24 GAUGE
B or D	100 TO 140	80 TO 108	30	4.0'	24 GAUGE

NOTES: 1. Specifications applicable to 20 gage and 24 gage metal panels fastened directly to 12" or 14" girth steel tube low flange.
 2. Fasteners spaced at 4'-2" to 4'-8" with 1/2" girth steel with ceiling and eave.
 3. Specifications applicable only for main roof system of 24 feet or less on row rafter design of 7' to 27' depth. (1.0' to 6'-2' (6.00')). See the requirements for other roof heights and/or spans may vary.

TABLE 1 (HIGH WIND REGION)
 ROW/RAFTER FRAME, END POST, GROUND ANCHOR AND PANEL FASTENER SPACING SPECIFICATIONS

WIND EXPOSURE CATEGORY	ULTIMATE WIND SPEED (MPH)	MINIMUM WIND SPEED (MPH)	MAXIMUM WIND SPEED (MPH)	AVERAGE FASTENER SPACING ON ROW/RAFTER FRAME AND PANELS OR OTHER (INCHES)	WIND PANELS SPACING
B or C	141 TO 150	109 TO 118	20	4.0	24 GAUGE
D	130 TO 150	101 TO 116	20	4.0	26 GAUGE

NOTES: 1. Specifications applicable to 20 gage and 24 gage metal panels fastened directly to 12" or 14" girth steel tube low flange.
 2. Fasteners spaced at 4'-2" to 4'-8" with 1/2" girth steel with ceiling and eave.
 3. Specifications applicable only for main roof system of 24 feet or less on row rafter design of 7' to 27' depth. (1.0' to 6'-2' (6.00')). See the requirements for other roof heights and/or spans may vary.

GENERAL NOTES

1. ALL DIMENSIONS SHALL BE TO THE STRUCTURE UNLESS OTHERWISE SPECIFIED. DIMENSIONS AND QUALITY SHALL BE AS SHOWN UNLESS OTHERWISE SPECIFIED. DIMENSIONS SHALL BE TO THE CENTER OF THE MEMBER UNLESS OTHERWISE SPECIFIED. DIMENSIONS SHALL BE TO THE CENTER OF THE MEMBER UNLESS OTHERWISE SPECIFIED. DIMENSIONS SHALL BE TO THE CENTER OF THE MEMBER UNLESS OTHERWISE SPECIFIED.

2. ALL DIMENSIONS SHALL BE TO THE STRUCTURE UNLESS OTHERWISE SPECIFIED. DIMENSIONS AND QUALITY SHALL BE AS SHOWN UNLESS OTHERWISE SPECIFIED. DIMENSIONS SHALL BE TO THE CENTER OF THE MEMBER UNLESS OTHERWISE SPECIFIED. DIMENSIONS SHALL BE TO THE CENTER OF THE MEMBER UNLESS OTHERWISE SPECIFIED.

3. ALL DIMENSIONS SHALL BE TO THE STRUCTURE UNLESS OTHERWISE SPECIFIED. DIMENSIONS AND QUALITY SHALL BE AS SHOWN UNLESS OTHERWISE SPECIFIED. DIMENSIONS SHALL BE TO THE CENTER OF THE MEMBER UNLESS OTHERWISE SPECIFIED. DIMENSIONS SHALL BE TO THE CENTER OF THE MEMBER UNLESS OTHERWISE SPECIFIED.

4. ALL DIMENSIONS SHALL BE TO THE STRUCTURE UNLESS OTHERWISE SPECIFIED. DIMENSIONS AND QUALITY SHALL BE AS SHOWN UNLESS OTHERWISE SPECIFIED. DIMENSIONS SHALL BE TO THE CENTER OF THE MEMBER UNLESS OTHERWISE SPECIFIED. DIMENSIONS SHALL BE TO THE CENTER OF THE MEMBER UNLESS OTHERWISE SPECIFIED.

5. ALL DIMENSIONS SHALL BE TO THE STRUCTURE UNLESS OTHERWISE SPECIFIED. DIMENSIONS AND QUALITY SHALL BE AS SHOWN UNLESS OTHERWISE SPECIFIED. DIMENSIONS SHALL BE TO THE CENTER OF THE MEMBER UNLESS OTHERWISE SPECIFIED. DIMENSIONS SHALL BE TO THE CENTER OF THE MEMBER UNLESS OTHERWISE SPECIFIED.

6. ALL DIMENSIONS SHALL BE TO THE STRUCTURE UNLESS OTHERWISE SPECIFIED. DIMENSIONS AND QUALITY SHALL BE AS SHOWN UNLESS OTHERWISE SPECIFIED. DIMENSIONS SHALL BE TO THE CENTER OF THE MEMBER UNLESS OTHERWISE SPECIFIED. DIMENSIONS SHALL BE TO THE CENTER OF THE MEMBER UNLESS OTHERWISE SPECIFIED.

7. ALL DIMENSIONS SHALL BE TO THE STRUCTURE UNLESS OTHERWISE SPECIFIED. DIMENSIONS AND QUALITY SHALL BE AS SHOWN UNLESS OTHERWISE SPECIFIED. DIMENSIONS SHALL BE TO THE CENTER OF THE MEMBER UNLESS OTHERWISE SPECIFIED. DIMENSIONS SHALL BE TO THE CENTER OF THE MEMBER UNLESS OTHERWISE SPECIFIED.

METAL CARPORT INSTALLATION PLANS AND DETAILS AND

FRAMING AND FASTENER SPECIFICATIONS

CAROLINA CARPORTS, INC.
 167 Carden Ridge Trail
 DOBSON, NORTH CAROLINA 27017

THE OWNER IS RESPONSIBLE FOR OBTAINING A BUILDING PERMIT, IF NEEDED, AND FOR COMPLYING WITH ALL LOCAL BUILDING CODE REQUIREMENTS.

THIS IS TO CERTIFY THAT THE CALCULATIONS AND SPECIFICATIONS WERE MADE BY THE UNDERSIGNED PROFESSIONAL ENGINEER, AND ARE IN ACCORDANCE WITH THE REQUIREMENTS OF THE 2015 & 2010 INTERNATIONAL BUILDING CODES AND THE 2015 BUILDING CODE OF ALABAMA.

LOADS	MAX. DEAD LOAD	MAX. LIVE LOAD	MAX. WIND LOAD	MAX. SNOW LOAD	MAX. UPLIFT AND SWAY LOAD
RESIDENTIAL	10	20	15	0	100
COMMERCIAL	10	20	15	0	100

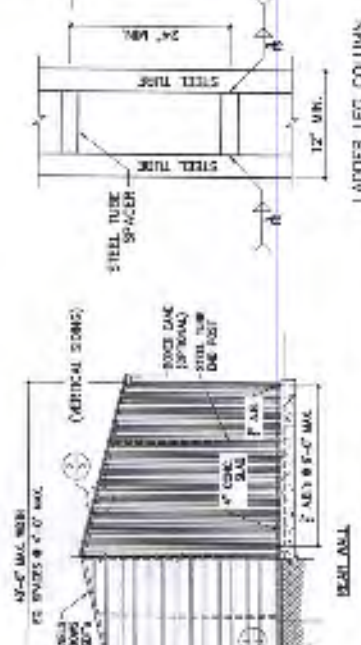
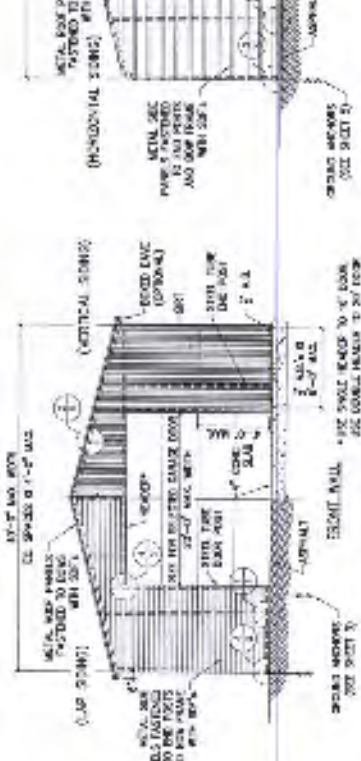
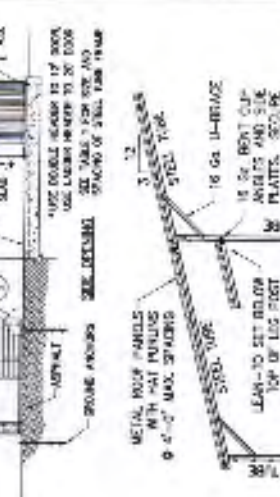
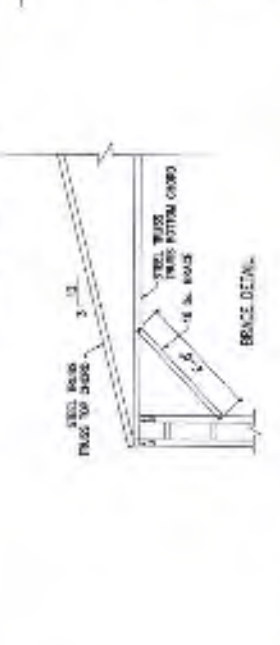
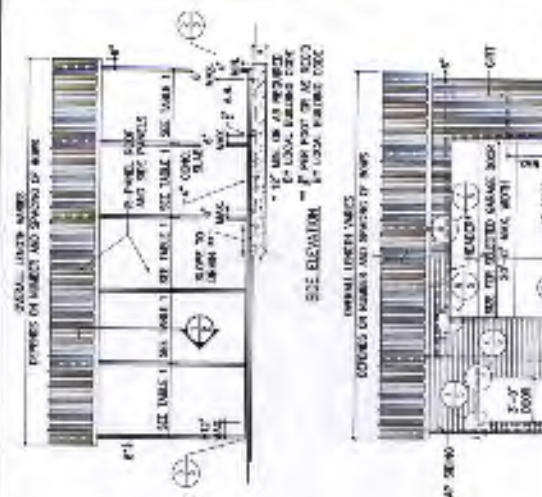
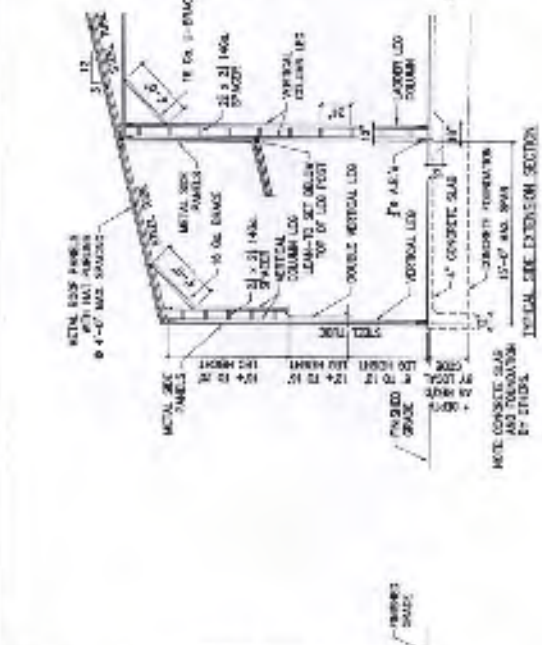
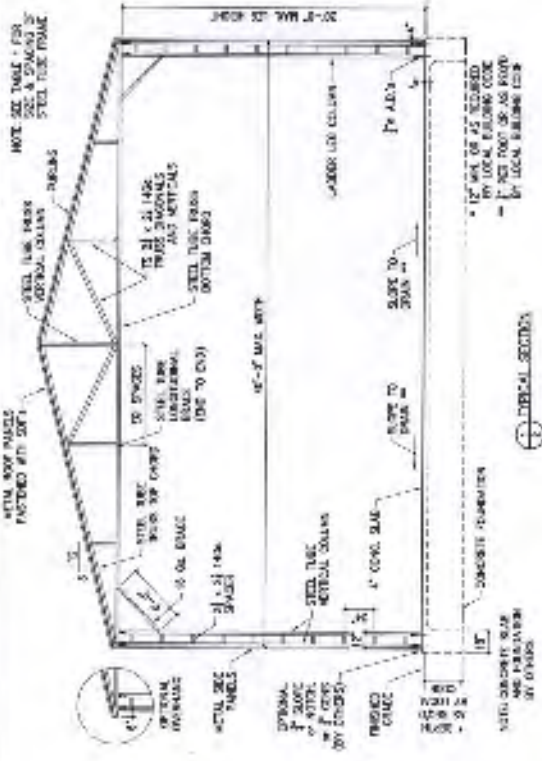
FASTENER TYPE	WIND SPEED (MPH)	MINIMUM SPACING (INCHES)
SCREW	100	12
NAIL	100	12



These plans have been provided for the purpose of obtaining a building permit for:
 Jeff Clammon/Shane Bailey
 1601 Sportsman Lake Road NW
 Cullman, AL 35055
 City of Cullman, AL
 License No. 16837
 State of Alabama
 Mechanical Engineering

Use of these plans by anyone other than the engineer of record is prohibited.

05/26/2020



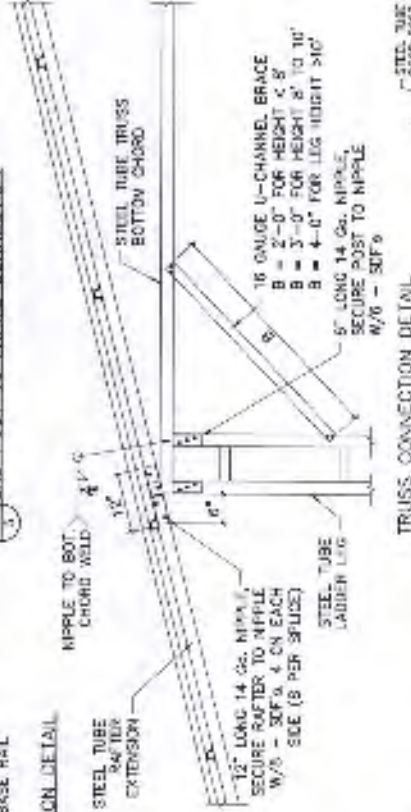
05/18/2020
SHEET 3 OF 4



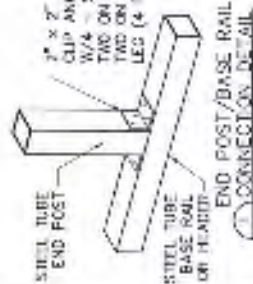
1 LEG/BASE RAIL CONNECTION DETAIL



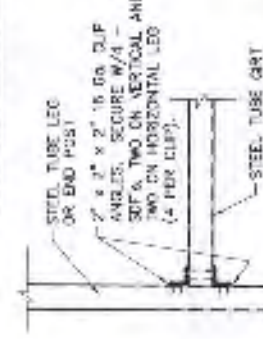
2 END POST TO FRAME CONNECTION



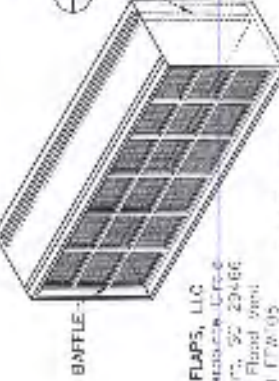
3 LADDER LEG/BASE RAIL CONNECTION



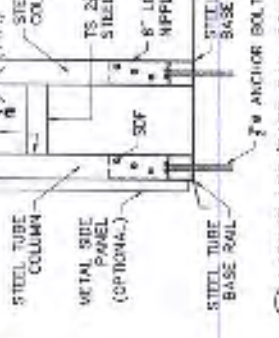
4 END POST/BASE RAIL CONNECTION DETAIL



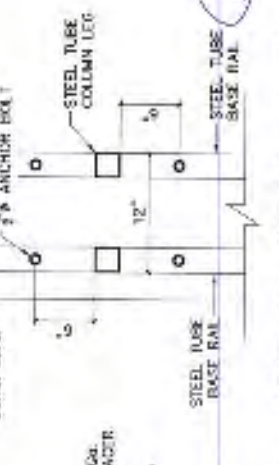
5 TRUSS CONNECTION DETAIL



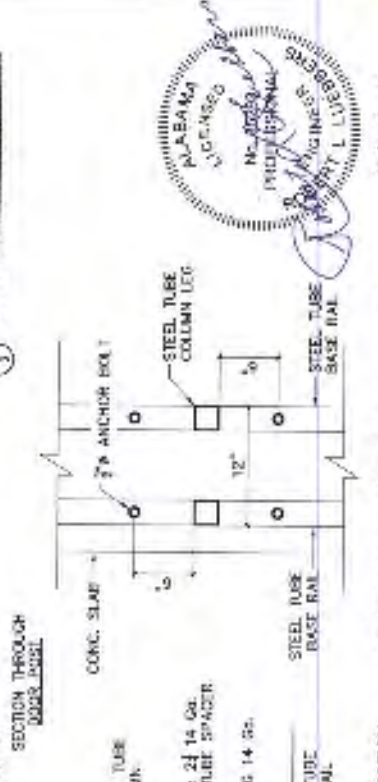
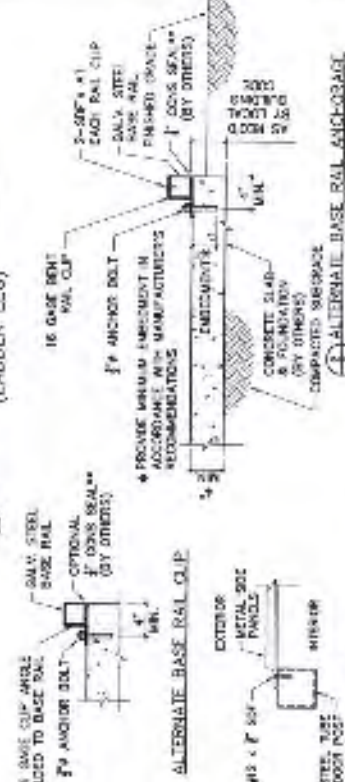
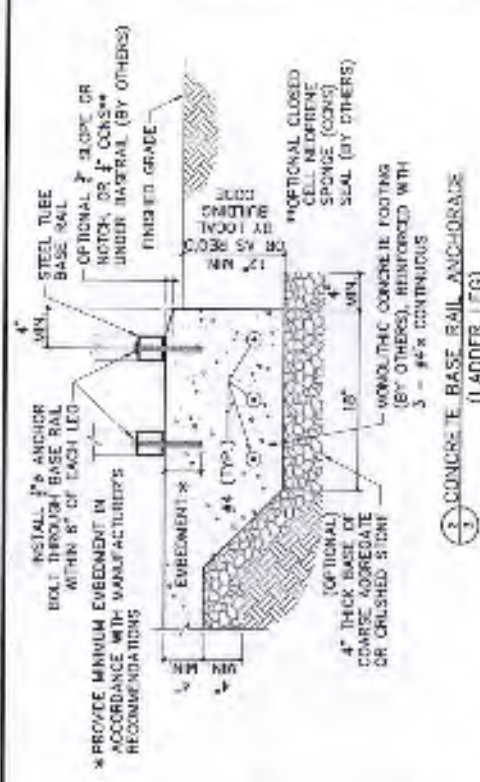
6 GBT TO POST CONNECTION



7 LADDER LEG/BASE RAIL CONNECTION



8 LADDER LEG - BASE RAIL CONNECTION

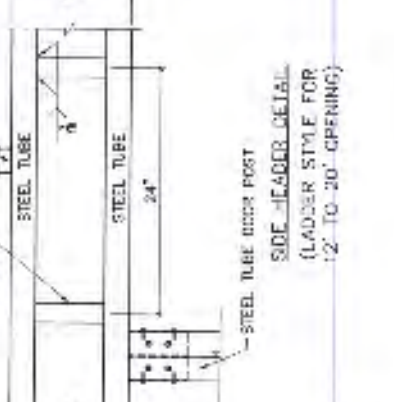
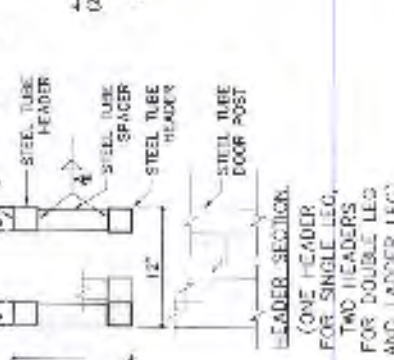
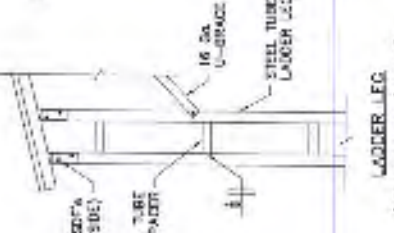
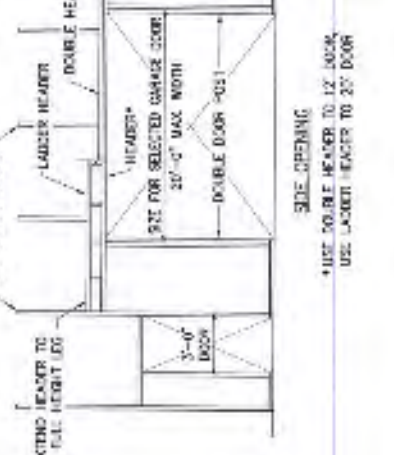
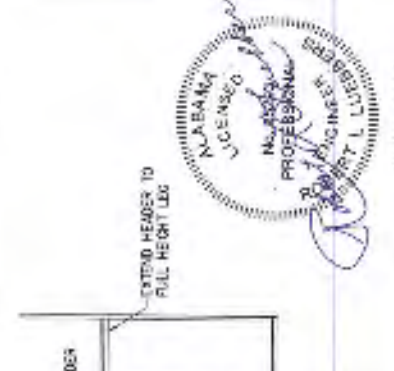
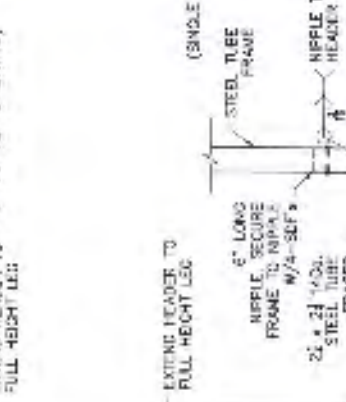
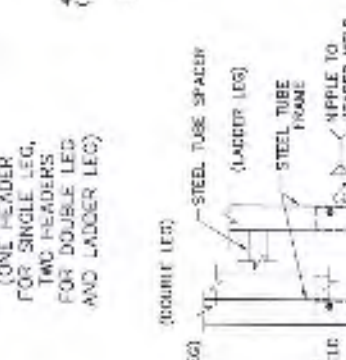
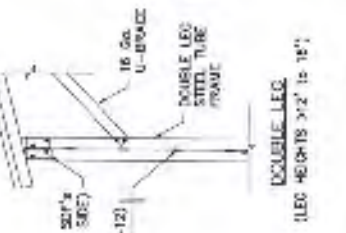
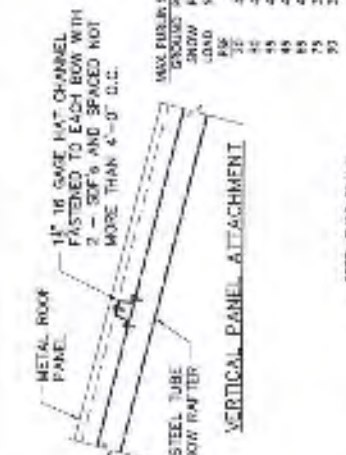
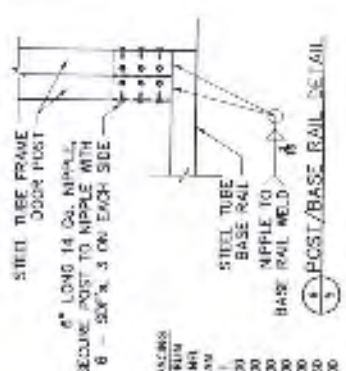
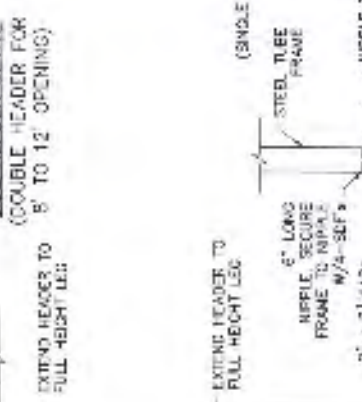
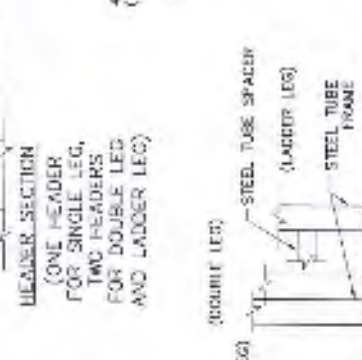
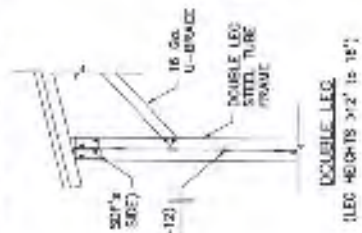
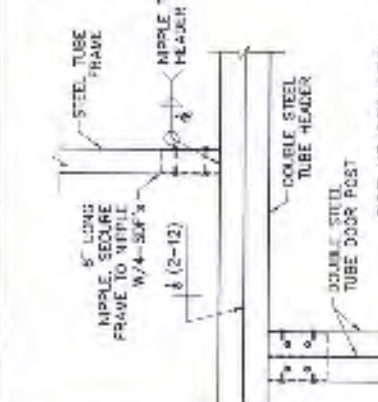
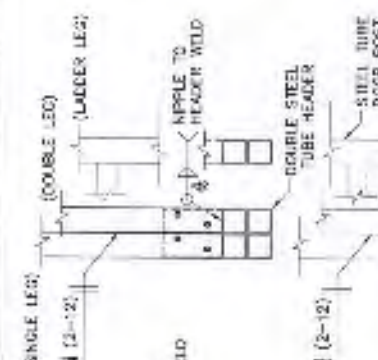
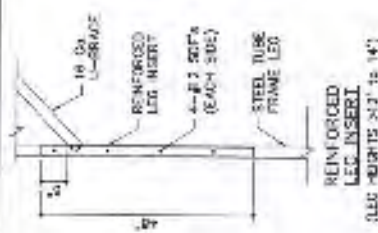
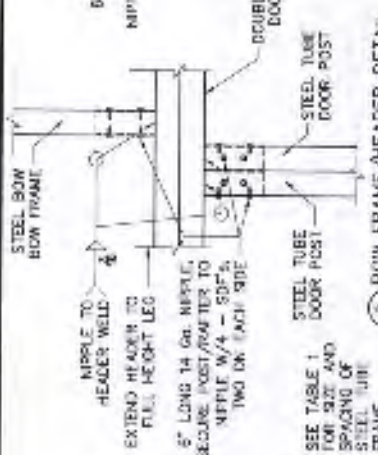
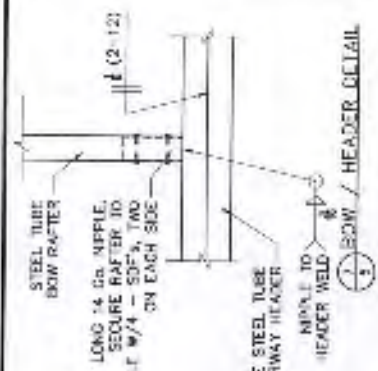


11 SECTION THROUGH DOOR POST



12 SECTION THROUGH DOOR POST





MAX. PULVER SPACING EXCEEDS PERM. ALLOW. PER ACI 308

SPACING	PERM. ALLOW.
12"	12"
18"	18"
24"	24"
30"	30"
36"	36"
42"	42"
48"	48"
54"	54"
60"	60"
66"	66"
72"	72"
78"	78"
84"	84"
90"	90"



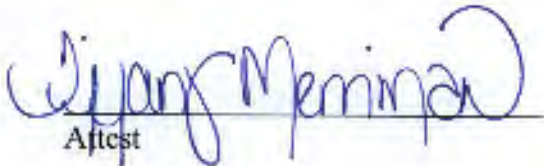
LEASE RENEWAL OF REAL ESTATE

On November 16, 2021, the Cullman County Commission "Lessor" approved the renewal of the property currently leased by the CULLMAN ELECTRIC COOPERATIVE "Lessee" at the following address:

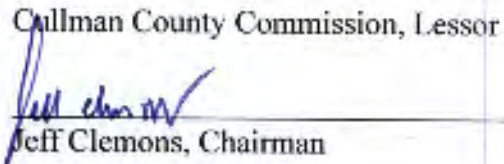
5.5 acres of property and the buildings located at
2151 3rd Ave SE
Cullman, Alabama

The Commission agreed to renew the real estate lease under the terms stated in the original contract attached as "Exhibit A". The rental rate shall increase to \$3090.00 per month beginning February 1, 2022 and ending January 31, 2023. All other terms of the original agreement shall remain the same.

IN WITNESS WHEREOF, THE PARTIES HERETO have executed this instrument on the day and date written above.


Aftest


Witness

Cullman County Commission, Lessor

Jeff Clemons, Chairman


Timothy P. Culpepper, CEO

MEMORANDUM OF AGREEMENT
BETWEEN CULLMAN COUNTY COMMISSION
AND
CULLMAN COUNTY FAIR ASSOCIATION

This agreement is made and entered into between the CULLMAN COUNTY COMMISSION and Cullman COUNTY FAIR ASSOCIATION.

PURPOSE AND SCOPE: The purpose of this MOA is to reach an agreement that will result in the Cullman County Commission's use of a portion of leased land from the Cullman County Fair Association for storage of equipment used to maintain Sportsman's Lake Park.

BACKGROUND:

The Cullman County Fair Association leased property from the Cullman County Commission on March 15, 2010. (Exhibit A). The Cullman County Commission needs a portion of the land currently leased to the Cullman County Fair Association to build a storage facility to hold equipment used to maintain Sportsman's Lake Park. The land used by the Cullman County Commission is attached as (Exhibit B).

CULLMAN COUNTY RESPONSIBILITIES UNDER THE MOA:

1. Labor and material to construct the storage building.
2. To maintain and enclose the area in Exhibit A and connect to the existing fence.

IT IS MUTUALLY UNDERSTOOD AND AGREED BY AND BETWEEN THE PARTIES THAT:

1. This agreement will be in full force as long as the Cullman County Fair Association leases the land from the Cullman County Commission.

EFFECTIVE DATE AND SIGNATURES:

This MOA shall be in effect upon the signature of the Cullman County Commission and the Cullman County Fair Association.

Signatures to the Agreement:

WITNESSES:

W. J. H. M. M. M.
W. J. H. M. M. M.
W. J. H. M. M. M.

CULLMAN COUNTY COMMISSION

[Signature]

Chairman

[Signature]

Associate Commissioner

[Signature]

Associate Commissioner

WITNESSES:

[Signature]

CULLMAN COUNTY FAIR ASSOCIATION

[Signature]

By: Charles Childers

Its: President

[Signature]

[Signature]

By: Barry Willingham

Its: Treasurer

MEMORANDUM OF AGREEMENT
BETWEEN CULLMAN COUNTY COMMISSION
AND
CULLMAN COUNTY FAIR ASSOCIATION

This agreement is made and entered into between the CULLMAN COUNTY COMMISSION and Cullman COUNTY FAIR ASSOCIATION.

PURPOSE AND SCOPE: The purpose of this MOA is to reach an agreement that will result in the Cullman County Commission's use of a portion of leased land from the Cullman County Fair Association for storage of equipment used to maintain Sportsman's Lake Park.

BACKGROUND:

The Cullman County Fair Association leased property from the Cullman County Commission on March 15, 2010. (Exhibit A). The Cullman County Commission needs a portion of the land currently leased to the Cullman County Fair Association to build a storage facility to hold equipment used to maintain Sportsman's Lake Park. The land used by the Cullman County Commission is attached as (Exhibit B).

CULLMAN COUNTY RESPONSIBILITIES UNDER THE MOA:

1. Labor and material to construct the storage building.
2. To maintain and enclose the area in Exhibit A and connect to the existing fence.

IT IS MUTUALLY UNDERSTOOD AND AGREED BY AND BETWEEN THE PARTIES THAT:

1. This agreement will be in full force as long as the Cullman County Fair Association leases the land from the Cullman County Commission.

EFFECTIVE DATE AND SIGNATURES:

This MOA shall be in effect upon the signature of the Cullman County Commission and the Cullman County Fair Association.

Signatures to the Agreement:

WITNESSES:

Jiffang Meminga
Jiffang Meminga
Jiffang Meminga

WITNESSES:

Alma West

Alma West

CULLMAN COUNTY COMMISSION

Joe Dunbar

Chairman

Tommy Watson

Associate Commissioner

Tommy Watson

Associate Commissioner

CULLMAN COUNTY FAIR ASSOCIATION

Charles Childers

By: Charles Childers

Its: President

Barry Willingham

By: Barry Willingham

Its: Treasurer



Remit To: Harris Computer Systems
 PO BOX 74008484
 Chicago, IL 60674-8484

Invoice LGMN00000007725
 Date 08/25/2021
 Page 1 of 1

Ship to
 CULLMAN COUNTY COMMISSION
 Gary Teichmiller
 500 2nd Avenue SW
 Room 105
 Cullman, AL 35055
 USA

Bill to
 CULLMAN COUNTY COMMISSION
 Gary Teichmiller
 500 2nd Avenue SW
 Room 105
 Cullman, AL 35055
 USA

1100-235

PO Number	Customer No.	Salesperson ID	Shipping Method	Payment Terms
	CIA,10		DELIVERY	Due Upon Receipt

Ordered	Item Number	Description	Unit Price	Ext Price
1.00	CSI-HLG SAAS SF	SmartFusion Application Delivery Services (SFADS) Per User Per Year: November 2021 to October 2022	US\$5,728.86	US\$5,728.86
1.00	CSI-HLG SAAS SF	Employee Self-Service Annual Hosting/Maintenance >150: November 2021 to October 2022	US\$1,670.92	US\$1,670.92
1.00	CSI-HLG MAINT SF	System Manager - SF: November 2021 to October 2022	US\$555.65	US\$555.65
1.00	CSI-HLG MAINT SF	Accounts Payable - SF: November 2021 to October 2022	US\$999.21	US\$999.21
1.00	CSI-HLG MAINT SF	Bank Reconciliation - SF: November 2021 to October 2022	US\$261.83	US\$261.83
1.00	CSI-HLG MAINT SF	Fixed Assets - SF: November 2021 to October 2022	US\$554.75	US\$554.75
1.00	CSI-HLG MAINT SF	Budget Preparation - SF: November 2021 to October 2022	US\$956.69	US\$956.69
1.00	CSI-HLG MAINT SF	Fund Ledger: November 2021 to October 2022	US\$1,397.70	US\$1,397.70
1.00	CSI-HLG MAINT SF	Payroll - SF: November 2021 to October 2022	US\$1,364.59	US\$1,364.59
1.00	CSI-HLG MAINT SF	Insurance & Benefits - SF: November 2021 to October 2022	US\$642.75	US\$642.75
1.00	CSI-HLG MAINT SF	Personnel - SF: November 2021 to October 2022	US\$921.23	US\$921.23
1.00	CSI-HLG MAINT SF	Project Reporting - SF: November 2021 to October 2022	US\$307.44	US\$307.44
1.00	CSI-HLG MAINT SF	Purchasing - SF: November 2021 to October 2022	US\$990.29	US\$990.29
1.00	CSI-HLG MAINT SF	Time and Attendance Interface - Standard - SF: November 2021 to October 2022	US\$626.54	US\$626.54
1.00	CSI-HLG MAINT SF	SmartQuery - SF: November 2021 to October 2022	US\$278.49	US\$278.49
1.00	CSI-HLG MAINT SF	SF Maintenance (AP Check RPT): November 2021 to October 2022	US\$42.89	US\$42.89
1.00	CSI-HLG MAINT SF	Payroll Customization SFPR-1669: November 2021 to October 2022	US\$1,137.82	US\$1,137.82

All payments are considered non-refundable. Please note that we require 90 day written notice prior to your requested date of termination in order to cancel any modules without a penalty fee.

Invoice Questions? Please call at 1-866-847-7747 or e-mail ar_hlg@harriscomputer.com

Subtotal	US\$18,557.84
Misc	US\$0.00
Tax	US\$450.33
Freight	US\$0.00
Trade Discount	US\$0.00
Total	US\$19,108.17



224 Broad Street
Suite 201
Gadsden, AL 35901
Tel (256) 543-9431
Fax (256) 543-9437

cdge.com

November 5, 2021

Mr. Matt Kinsland
Cullman County Commission
500 Second Avenue SW, Room 105
Cullman, Alabama 35055

**Re: Cullman County Safe Room Backup
Cullman County Commission
Cullman, Alabama**

Dear Mr. Kinsland:

We have checked the bids that were received on October 29, 2021 and have determined that the bids are in order. We recommend the contract be awarded to the low bidder as follows:

A & S Electrical Contractors, Inc.----- \$56,500.00

Also enclosed is a copy of the bid tabulation for your use.

If you have any questions, please let me know.

Sincerely,

CDG Engineers & Associates, Inc.

Chris Ross, P.E.
Market Director

Enclosure

BID TABULATION
 Project Name: Cullman County Safe Rooms Power Backup
 Owner: Cullman County Commission
 Bid Date: October 29, 2021
 Bid Time: 10:00 AM

BID ITEM	DESCRIPTION	QTY	UNIT	A & S ELECTRICAL CONTRACTORS INC.		MASTIN'S INC.		K R M ELECTRICAL CONTRACTORS	
				UNIT PRICE	EXTENSION	UNIT PRICE	EXTENSION	UNIT PRICE	EXTENSION
1	Storm Shelter Fan and Lighting Improvements (All Locations)	1	L.S.	\$56,500.00	\$5,500.00	\$57,724.00	\$57,724.00	\$60,491.25	\$60,491.25
TOTAL BID:				\$56,500.00	\$5,500.00	\$57,724.00	\$57,724.00	\$60,491.25	\$60,491.25

CERTIFIED TRUE AND CORRECT:



Christopher Michael Ross, P.E.
 Ala. Reg. P.E. #24739

INVITATION TO BIDDERS

The Cullman County Commission will be receiving bids until 2:00 p.m., Tuesday, November 9, 2021, in Room 105 of the Cullman County Courthouse, Cullman, Alabama, for a complete re-roofing project for the Cullman County Property located at 310 3rd Ave. NE, Cullman, AL 35055. At this time sealed bids will be publicly opened and read aloud.

The Cullman County Commission reserves the right to reject any and/or all bids and to waive any formalities in the bidding.

All bids must comply with State of Alabama bid requirements, including applicable bonds (bid bond 5% of bid, not to exceed \$10,000.00).

Any questions regarding this bid should be directed to Shane Bailey, Facilities & Equipment Manager at (256) 775-4925, or sbailey@co.cullman.al.us.

BID PRICE: \$ 149,000.00

BOND Construction, LLC

Company

1001 30th Ave. Northport, AL 35476

Mailing Address

205-349-1560

Phone/Fax

Scott Bond

Representative

INVITATION TO BIDDERS

The Cullman County Commission will be receiving bids until 2:00 p.m., Tuesday, November 9, 2021, in Room 105 of the Cullman County Courthouse, Cullman, Alabama, for a complete re-roofing project for the Cullman County Property located at 310 3rd Ave. NE, Cullman, AL 35055. At this time sealed bids will be publicly opened and read aloud.

The Cullman County Commission reserves the right to reject any and/or all bids and to waive any formalities in the bidding.

All bids must comply with State of Alabama bid requirements, including applicable bonds (bid bond 5% of bid, not to exceed \$10,000.00).

Any questions regarding this bid should be directed to Shane Bailey, Facilities & Equipment Manager at (256) 775-4925, or sbailey@co.cullman.al.us.

BID PRICE: \$ 169,940.00

Willoughby Roofing & Sheet Metal, Inc.
Company

111 2nd Ave NE, Cullman, AL 35055
Mailing Address

256. 734. 1387 (office)

256. 734. 1190 (FAX)
Phone/Fax


Representative

INVITATION TO BIDDERS

The Cullman County Commission will be receiving bids until 2:00 p.m., Tuesday, November 9, 2021, in Room 105 of the Cullman County Courthouse, Cullman, Alabama, for a complete re-roofing project for the Cullman County Property located at 310 3rd Ave. NE, Cullman, AL 35055. At this time sealed bids will be publicly opened and read aloud.

The Cullman County Commission reserves the right to reject any and/or all bids and to waive any formalities in the bidding.

All bids must comply with State of Alabama bid requirements, including applicable bonds (bid bond 5% of bid, not to exceed \$10,000.00).

Any questions regarding this bid should be directed to Shane Bailey, Facilities & Equipment Manager at (256) 775-4925, or sbailey@co.cullman.al.us.

BID PRICE: \$ 217,500.00
Two Hundred Seventeen Thousand Five Hundred Dollars

GKL Companies, Inc

Company

112 Rainbow Industrial Drive

Mailing Address

Rainbow City, AL 35906

256-413-4639/256-413-4639

Phone/Fax


Randall Lipscomb

Representative

INVITATION TO BIDDERS

The Cullman County Commission will be receiving bids until 2:00 p.m., Tuesday, November 9, 2021, in Room 105 of the Cullman County Courthouse, Cullman, Alabama, for a complete re-roofing project for the Cullman County Property located at 310 3rd Ave. NE, Cullman, AL 35055. At this time sealed bids will be publicly opened and read aloud.

The Cullman County Commission reserves the right to reject any and/or all bids and to waive any formalities in the bidding.

All bids must comply with State of Alabama bid requirements, including applicable bonds (bid bond 5% of bid, not to exceed \$10,000.00).

Any questions regarding this bid should be directed to Shane Bailey, Facilities & Equipment Manager at (256) 775-4925, or sbailey@co.cullman.al.us.

BID PRICE: \$ 309,600⁰⁰ *Three Hundred Nine Thousand Six Hundred Dollars*

Johns and Kirksey, Inc.
Company

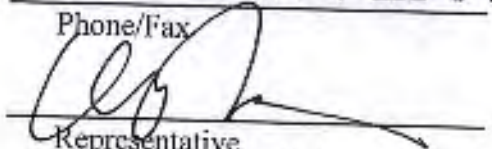
5424 Metro Park Drive

Mailing Address

Tuscaloosa, AL 39405

205-759-2830, 205-345-0693

Phone/Fax


Representative

William E. Johns, President

INVITATION TO BIDDERS

The Cullman County Commission will be receiving bids until 2:00 p.m., Thursday, November 4, 2021, in Room 105 of the Cullman County Courthouse, Cullman, Alabama, for traffic signs. At this time sealed bids will be publicly opened and read aloud.

This bid will be a cooperative bid between the Cullman County Commission and the following municipalities within Cullman County.

Town of Good Hope, Town of Colony, Town of Garden City, Town of Dodge City, Town of Holly Pond, Town of Baileyton, Town of Fairview, Town of West Point, City of Hanceville, Cullman County Board of Education, City of Cullman, and the Town of Berlin.

The Award of the bid will be made by the Cullman County Commission on behalf of all the indicated governmental entities. Price bid will include all freight charges.

Each participating governmental entity will be responsible for issuing its own purchase orders, delivery instructions, invoicing, insurance requirements, and issue its own tax exemption certificates as required by vendors.

All orders must be delivered within fourteen(14) days from date of order.

The Cullman County Commission reserves the right to reject any and/or all bids and to waive any formalities in the bidding.

If mutually agreeable between both parties, the Cullman County Commission may extend the bid period one- year increments for up to three years.

Total Bid Price \$ 78577.42

256-435-5014
Phone

Traffic Signs, Inc.
Company

Fax

850 Whites Gap Rd SE
Mailing Address


Representative

Jacksonville, AL 36265

SPECIFICATIONS FOR ROAD SIGNS

SIZE	STOCK	DESCRIPTION	ESTIMATED QUANTITY	PRICE	EXTENDED PRICE
18"X24"	R12-2	Axle Weight Limit Tons	20	18.24	364.80
24"x30"	R12-2	Axle Weight Limit Tons	20	30.40	608.00
040X14X16	SVM-V1	Slow Moving Vehicle	5	12.95	64.75
24"x24"	W41-4A	Watch for Children	20	24.32	486.40
24"X24"	N-12	Deaf Child Area	5	24.32	121.60
12"X18"	R7-8B	Handicapped Parking Only	10	9.12	91.20
18"X18"	D9-6	Handicapped	5	13.68	68.40
12"X18"	R7-8A	Reserved Parking	5	9.12	45.60
18"X12"	M1-6A	Arrows	350	10.04	3514.00
21"X15"	M1-6A	Arrows	150	14.65	2197.50
18"X24"	CV-9	Thanks for not Littering	40	18.24	729.60
18"X24"		Neighborhood Watch (2 colors)	10	20.06	200.60
18"X24"		Aluminum Blanks	50	13.68	684.00
18"X18"		Aluminum Blanks	50	10.26	513.00
24" X 24"		Aluminum Blanks	50	18.24	912.00
12"X6"		Aluminum Blanks	5	2.43	12.15
30"X72"		Aluminum Blanks	10	68.40	684.00
30"X30"		Aluminum Blanks	50	28.50	1425.00
¾"X50YD		Black Border Tape	2	10.82	21.64
¾"X50YD		White Border Tape	2	10.82	21.64
30"		STOP FACES P/S	50	10.88	544.00
24"		STOP FACES P/S	50	6.96	348.00
36"		STOP FACES P/S	25	15.66	391.50

All signs .080 Aluminum High Intensity Facings. Signs will be orders on an "as needed" basis for a period of one year, beginning with the date of the award.

SPECIFICATIONS FOR ROAD SIGNS

SIZE	STOCK	DESCRIPTION	ESTIMATED QUANTITY	PRICE	EXTENDED PRICE
18 1/2"		RED DOTS for STOP AHEAD	100	3.88	388.00
18"	M1-6	County Route Marker	300	24.33	7299.00
24"	M1-6	County Route Marker	190	33.36	6338.40
24"	R1-1	Stop	20	23.35	467.00
30"	R1-1	Stop	115	36.48	4195.20
30"	W1-1	Turn Symbol	30	38.00	1140.00
30"	W1-2 L/R	Curve Symbol	30	38.00	1140.00
30"	W1-3 L/R	Curve Sign	30	38.00	1140.00
30"	W1-5 L/R	Winding Road Symbol	10	38.00	380.00
18"X24"	W1-8	Chevron Alignment Symbol	20	18.24	364.80
30"	W2-1	Crossroads Symbol	10	38.00	380.00
30"	W2-2	Side Road Symbol	10	38.00	380.00
30"	W3-1	Stop Ahead Symbol	20	40.25	805.00
30"	W5-2	Narrow Bridge	5	38.00	190.00
30"	W5-3	One Lane Bridge	5	38.00	190.00
30"	W7-1	Hill Symbol	5	38.00	190.00
30"	W8-1	Bump	10	38.00	380.00
30"	W8-2	Dip	10	38.00	380.00
30"	W8-7	Loose Gravel	30	38.00	1140.00
30"	W11-8	Advance Fire Station Symbol	10	38.00	380.00
30"	W11-10	Advance Truck Crossing Symbol	10	38.00	380.00
30"	W14-1	Dead End	30	38.00	1140.00

All signs .080 Aluminum High Intensity Facings. Signs will be orders on an "as needed" basis for a period of one year, beginning with the date of the award.

SPECIFICATIONS FOR ROAD SIGNS

SIZE	STOCK	DESCRIPTION	ESTIMATED QUANTITY	PRICE	EXTENDED PRICE
30"	W14-2	No Outlet	20	38.00	760.00
36"	W20-1	Road Construction Ahead	10	54.72	547.20
36x36		Mowers Ahead Mesh Signs w/Ribs Orange	20	40.11	802.20
36x36		Road Work Ahead Mesh Signs w/Ribs Orange	20	40.11	802.20
18x18		Solid Orange Vinyl Flags 24" Wooden Staff	40	5.00	200.00
30"	W21-1A	Men Working Symbol	10	38.00	380.00
18"x 24"	R2-1	Speed Limit Blanks	10	18.24	182.40
24"x30"	R2-1	Speed Limit Blanks	10	30.40	304.00
12"x36"	H-1 L/R	Bridge/Object Markers	10	18.24	182.40
30"	W42-7	Trucks Entering	10	38.00	380.00
30"	W14-4	Limited Sight Distance	5	38.00	190.00
30"	W10-11	Truck Symbol	10	38.00	380.00
30"	N-12	Deaf Child Ahead	10	38.00	380.00
12x18"	R7-8A	Handicap Parking	10	9.12	91.20
48x24"	W1-7	Large Arrow	5	48.64	243.20
36"x12"	W1-6	ONE WAY ARROW	5	18.24	91.20
30x30"	R5-1	Do Not Enter	5	38.00	190.00
24x24"	R5-1	Do Not Enter	5	24.32	121.60
36X36X36"	R1-2	Yield	10	31.92	319.20
30"x30"x30"	R1-2	Yield	10	23.41	234.10
12"x6"	R1-3	4-Way	20	2.95	59.00
12"x6"	R1-3A	3-Way	20	2.95	59.00

All signs .080 Aluminum High Intensity Facings. Signs will be orders on an "as needed" basis for a period of one year, beginning with the date of the award.

SPECIFICATIONS FOR ROAD SIGNS

SIZE	STOCK	DESCRIPTION	ESTIMATED QUANTITY	PRICE	EXTENDED PRICE
18"X18"	FL-1-6	Stop Slow Paddle	10 BAKED ENAMEL.	24.76	247.60
30"X30"	W-41-1	Blank	10	38.00	380.00
30"X30"	W-41-2	Blank	10	38.00	380.00
8"x 24"		Blank	30	8.15	244.50
8' 2 lb/ft.		Enamel Post	300	14.72	4416.00
10' 2 lb/ft.		Enamel Post	200	18.40	3680.00
2"	C	Numbers	6	2.99	17.94
3"	C	Letters and Numbers	2	5.07	10.14
7"		Delineator Posts	50	9.07	453.50
8"	E PS**	Letters (Pack Contains 25)	2	19.87	39.74
6"	C PS	Letters - like letters or	4	8.76	35.04
4"	C PS	Letters - Numbers	6	8.63	51.78
3"	C PS	Blank Numbers 0-1-2-3-4-5-6-7-8-9	Packet of each	5.38	53.80
8"X50 yd	LEFT or RIGHT	ORANGE & WHITE PRE-STRIPED BARICADE SHEETING High Intensity, P.S.	1 ROLL.	155. ⁰⁰	155.00
30"X50 yd	PS	Reflector High Intensity Sheeting Sq. Ft.	1	432. ⁰⁰	432.00
6" X 50 yd	PS	Reflector Sheeting High Intensity	1	88. ⁰⁰	88.00
30"X30"	S3-1 **	School Bus Stop Ahead	20	38.00	760.00
30"X30"	S1-1 **	School Crossing Sign	5	38.00	190.00
36"X36"	S2-1 **	School Crossing Sign	5	54.72	273.60
24"x48"	S5-1	School/Speed Limit	5	48.64	243.20
30"X30"	W11-2A **	School Crossing Sign	5	38.00	190.00
24"x36"	R12-	Weight Limit Signs 7 Vehicles	20	36.48	729.60
24"x48"		Weight Limit Tons	20	48.64	972.80

*Quoting 1.12# per foot, green

**Quoting High Intensity, White, Pressure Sensitive Letters

ju

SPECIFICATIONS FOR ROAD SIGNS

SIZE	STOCK	DESCRIPTION	ESTIMATED QUANTITY	PRICE	EXTENDED PRICE
24"X30"	R-12-1	Weight Limit	20	30.40	608.00
8'	High Intensity	BARICADES FEET & LEGS	10	350. ⁰⁰	3500.00
Standard Size for 8'	Barricade	FEET & LEGS ONLY	10	63.04	630.40
	SIGN STANDS W/OUT SPRINGS	ALUM LEGS	6	110.00	?????????? 660.00
30"	W-10-1	Railroad Crossing Sign	5	38.00	190.00
36"	W-10-1	Railroad Crossing Sign	5	54.72	273.60
48X48X36	W14-3	No Passing Zone	5	38.00	190.00
24X24		ADOPT-A-MILE	50	24.32	1216.00
36X36		MESH SIGNS ALL SIGNS W/RIBS	50	40.11	2005.50
	V-11	TRIPOD STAND	50	45.00	2250.00
18"		HIDDEN DRIVE YELLOW	50	13.68	684.00
5/16"X2 1/4"		CARRIAGE BOLTS	2000	.42	840.00
5/16"		NUTS	2000	.07	140.00
18"		CONES WITH WEIGHTED BASE	20	7.70	154.00
28"		CONES WITH WEIGHTED BASE	20	13.99	279.80
		SAFETY DRUMS WITH WEIGHTED BASE	20	58.81	1176.20

* Please See attached Bid stipulations

TOTAL \$ 78,577.42

All signs .080 Aluminum High Intensity Facings. Signs will be orders on an "as needed" basic for a period of one year, beginning with the date of the award.

Unless specified, bid pricing is for High Intensity sheeting only.

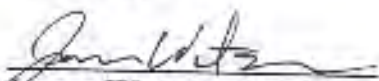
All signs must meet standard requirements of the Manual on uniform Traffic Control Devices. Any questions regarding this bid should be directed to Mr. Steve Johns at the County Road Dept. (256) 796-1336.

TRAFFIC SIGNS, Inc.
850 Whites Gap Road SE
Jacksonville, Alabama 36265

Cullman County Bid Stipulations:

- Every effort will be made to complete and ship all orders in 1-30 days. Specialty signs may take longer. **We have a staunch reputation for the quickest and best service in the industry.**
- Traffic Signs, inc. reserves the right for our bids to be "all or nothing".
- Prices given on the bid are for standard signs or sign faces only which are listed in the MUTCD manual at the time of the bid opening.
- Posts must be ordered in quantities of 50 similar size and type.
- Unless specified, bidding of Type IV reflective sheeting is for standard colors only and does not include fluorescent sheeting.
- For signs such as County Route Markers and Weight Limits, the bid price does not include numbers unless specified.
- Type III Barricades must have a minimum order of 5 in order for Traffic Signs, Inc. to pay for shipping.
- Mesh signs must be standard logos and words only. A list of standard logos and words are available upon request.
- Drums included four stripes that are four inches tall made from Reboundable High Intensity sheeting. A tire ring base is included. Drums must be a minimum order of 5.
- We look forward to having you as a customer and delivering great products with great service.

Sincerely,


James Watson, President
Traffic Signs, Inc.

November 1, 2021
Date

INVITATION TO BIDDERS

The Cullman County Commission will be receiving bids until 2:00 p.m., Thursday, November 4, 2021, in Room 105 of the Cullman County Courthouse, Cullman, Alabama, for traffic striping. At this time sealed bids will be publicly opened and read aloud.

This bid will be a cooperative bid between the Cullman County Commission and the following municipalities located within Cullman County. City of Good Hope, Town of Colony, Town of Garden City, Town of Dodge City, Town of Holly Pond, Town of Baileyton, the Town of Fairview, Town of West Point, City of Hanceville, Cullman County Commission on Education, City of Cullman, and the Town of Berlin.

The award of this bid will be made by the Cullman County Commission on behalf of all indicated governmental entities.

Each participating governmental entity will be responsible for issuing its own purchase orders, deliver instructions, invoicing, insurance requirements, and issue its own tax exemption certificates as required by vendors.

The Cullman County Commission reserves the right to reject any/or all bids to waive any formalities in the bidding.

All bids must comply with State of Alabama bid requirements.

COMPLIANCE WITH THE BEASON-HAMMON ALABAMA TAXPAYER AND
CITIZEN PROTECTION ACT

(ACT 2011-535, AS AMENDED BY ACT 2012-491)

By signing this contract, grant, or other agreement, the contracting parties affirm, for the duration of the agreement, that they will not violate federal immigration law or knowingly employ, hire for employment, or continue to employ an unauthorized alien within the State of Alabama. Furthermore, a contracting party found to be in violation of this provision shall be deemed in breach of the agreement and shall be responsible for all damages resulting therefrom. The Contractor is enrolled in E-Verify unless it is not eligible to enroll because of the rules of that program or other factors beyond its control.

SPECIFICATIONS FOR TRAFFIC STRIPING

This bid shall be to perform the work and supply the materials, as needed and described therein, for a one (1) year period beginning on the date of the award.

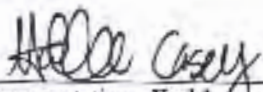
All work performed and all materials supplied shall conform to the requirements of the Ala. Dept. of Transportation's Standard Specification for Highway Construction, current edition, and any revisions or special issued since its publications, and also to the requirements of the U.S. Dept. of Transportation Manual on Traffic Control Devices.

		Price per Mile
701A-004	Solid White, Class 1, Type A Traffic Stripe	\$ 595.00
701A-008	Broken Yellow, Class 1 Type A Traffic Stripe	\$ 315.00
701A-012	Solid Yellow, Class 1, Type A Traffic Stripe	\$ 595.00
701A-031	Solid White, Class 2, Type A Traffic	\$ 3,500.00
701A-035	Solid Yellow, Class 2, Type A Traffic Stripe	\$ 3,500.00
701A-045	Broken Yellow, Class 2, Type Traffic Stripe	\$ 1,700.00
701C-000	Broken Temporary Traffic Stripe	\$ 900.00
701C-001	Solid Temporary Traffic Stripe	\$ 900.00
701G-083	Solid White, Class 2T, Type A Traffic Stripe	\$ 2,600.00
701G-086	Broken Yellow, Class 2T, Type A Traffic Stripe	\$ 1,200.00
701G-089	Solid Yellow, Class 2T, Type A Traffic Stripe	\$ 2,600.00
		Price per Sq. Feet
703A-002	Traffic Control Markings, Class 2, Type A	\$ 6.00
703B-002	Traffic Control Legends, Class 2, Type A	\$ 6.00
703A-000	Traffic Control Markings, Class 1, Type A	\$ 3.00
703B-000	Traffic Control Legends, Class 1, Type A	\$ 3.00
		Price per Each
705A-037	Raised Reflective Pavement Markers Class A-II, Type 2-D	\$ 6.00

J. C. Cheek Contractors, Inc.
Company

(662) 289-1631 Fax: (662) 289-6806
Phone/Fax

O.O. Bix 1138, Kosciusko, MS 39090
Mailing Address


Representative Hollie Casey/President

Any questions regarding this bid should be directed to the County Engineer, Bryan Cheatwood, at (256)-796-1336

BID #1368

INVITATION TO BIDDERS

The Cullman County Commission will be receiving bids until 2:00 p.m., Thursday, November 4, 2021, in Room 105 of the Cullman County Courthouse, Cullman, Alabama, for traffic striping. At this time sealed bids will be publicly opened and read aloud.

This bid will be a cooperative bid between the Cullman County Commission and the following municipalities located within Cullman County. City of Good Hope, Town of Colony, Town of Garden City, Town of Dodge City, Town of Holly Pond, Town of Baileyton, the Town of Fairview, Town of West Point, City of Hanceville, Cullman County Commission on Education, City of Cullman, and the Town of Berlin.

The award of this bid will be made by the Cullman County Commission on behalf of all indicated governmental entities.

Each participating governmental entity will be responsible for issuing its own purchase orders, deliver instructions, invoicing, insurance requirements, and issue its own tax exemption certificates as required by vendors.

The Cullman County Commission reserves the right to reject any/or all bids to waive any formalities in the bidding.

All bids must comply with State of Alabama bid requirements.

COMPLIANCE WITH THE BEASON-HAMMON ALABAMA TAXPAYER AND CITIZEN PROTECTION ACT


(ACT 2011-535, AS AMENDED BY ACT 2012-491)

By signing this contract, grant, or other agreement, the contracting parties affirm, for the duration of the agreement, that they will not violate federal immigration law or knowingly employ, hire for employment, or continue to employ an unauthorized alien within the State of Alabama. Furthermore, a contracting party found to be in violation of this provision shall be deemed in breach of the agreement and shall be responsible for all damages resulting therefrom. The Contractor is enrolled in E-Verify unless it is not eligible to enroll because of the rules of that program or other factors beyond its control.

OCT 20 2021

**Ozark Striping Company
Special Notes for Bids**

- Note:** The total minimum dollar volume ordered for Class 1 Striping shall exceed two thousand, five hundred dollars (\$2,500.00) per work order.
- Note:** The total minimum dollar volume ordered for Class 2 Striping shall exceed seven thousand, five hundred dollars (\$7,500.00) per work order.
- Note:** The total minimum dollar volume ordered for Class 2T Striping shall exceed seven thousand, five hundred dollars (\$7,500.00) per work order.
- Note:** The total minimum dollar volume ordered for Control Markings & Legends Class 2 or Rumble Strips shall exceed one thousand, five hundred dollars (1,500.00) per work order.
- Note:** The total minimum dollar volume ordered for Temporary Traffic Stripe shall exceed one thousand dollars (\$1,000.00) per work order.
- Note:** The total minimum dollar volume ordered for Road Pavement Markers shall exceed one thousand, two hundred fifty dollars (\$1,250.00) per work order.
- Note:** Prices quoted in this bid do not include any cleaning of roadway, no sweeping, no cutting of grass from shoulders, no debris removed and no washing of roadway.
- Note:** These items are quoted under ALDOT Specifications prior to any special provisions.
- Note:** Ozark Striping Company will accept this bid on an all or none basis only.
- Note:** Ozark Striping Company requires at least 14 days notice before work can begin for scheduling purposes. We would also request that you send us your work orders in a group that contains a 10 Mile Minimum. We would also request at least 14 days to complete our work order. If you accept our bid and issue a purchase order, these terms and conditions will apply.
- Note:** All 2T lines will be shot at 60 mil.



Leon M. Gross, III - President

SPECIFICATIONS FOR TRAFFIC STRIPING

This bid shall be to perform the work and supply the materials, as needed and described therein, for a one (1) year period beginning on the date of the award.

All work performed and all materials supplied shall conform to the requirements of the Ala. Dept. of Transportation's Standard Specification for Highway Construction, current edition, and any revisions or special issued since its publications, and also to the requirements of the U.S. Dept. of Transportation Manual on Traffic Control Devices.

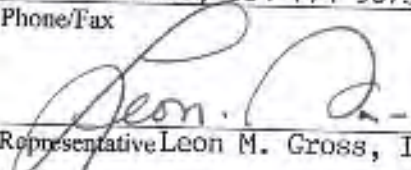
		Price per Mile
701A-004	Solid White, Class 1, Type A Traffic Stripe	\$ 775.00
701A-008	Broken Yellow, Class 1 Type A Traffic Stripe	\$ 390.00
701A-012	Solid Yellow, Class 1, Type A Traffic Stripe	\$ 775.00
701A-031	Solid White, Class 2, Type A Traffic	\$ 2,900.00
701A-035	Solid Yellow, Class 2, Type A Traffic Stripe	\$ 2,900.00
701A-045	Broken Yellow, Class 2, Type Traffic Stripe	\$ 1,725.00
701C-000	Broken Temporary Traffic Stripe	\$ 900.00
701C-001	Solid Temporary Traffic Stripe	\$ 900.00
701G-083	Solid White, Class 2T, Type A Traffic Stripe	\$ 2,125.00
701G-086	Broken Yellow, Class 2T, Type A Traffic Stripe	\$ 1,025.00
701G-089	Solid Yellow, Class 2T, Type A Traffic Stripe	\$ 2,125.00
		Price per Sq. Feet
703A-002	Traffic Control Markings, Class 2, Type A	\$ 5.50
703B-002	Traffic Control Legends, Class 2, Type A	\$ 5.50
703A-000	Traffic Control Markings, Class 1, Type A	\$ 2.50
703B-000	Traffic Control Legends, Class 1, Type A	\$ 3.00
		Price per Each
705A-037	Raised Reflective Pavement Markers Class A-H, Type 2-D	\$ 5.00

*** PLEASE SEE ATTACHED OZARK STRIPING COMPANY, INC. SPECIAL NOTES ***

Ozark Striping Company, Inc.
Company

334-774-2138, 334-774-9073
Phone/Fax

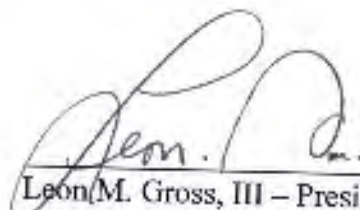
P.O. Box 847, Ozark, AL 36361
Mailing Address


Representative Leon M. Gross, III - President

Any questions regarding this bid should be directed to the County Engineer, Bryan Cheatwood, at (256)-796-1336

**Ozark Striping Company
Special Notes for Bids**

- Note:** The total minimum dollar volume ordered for Class 1 Striping shall exceed two thousand, five hundred dollars (\$2,500.00) per work order.
- Note:** The total minimum dollar volume ordered for Class 2 Striping shall exceed seven thousand, five hundred dollars (\$7,500.00) per work order.
- Note:** The total minimum dollar volume ordered for Class 2T Striping shall exceed seven thousand, five hundred dollars (\$7,500.00) per work order.
- Note:** The total minimum dollar volume ordered for Control Markings & Legends Class 2 or Rumble Strips shall exceed one thousand, five hundred dollars (1,500.00) per work order.
- Note:** The total minimum dollar volume ordered for Temporary Traffic Stripe shall exceed one thousand dollars (\$1,000.00) per work order.
- Note:** The total minimum dollar volume ordered for Road Pavement Markers shall exceed one thousand, two hundred fifty dollars (\$1,250.00) per work order.
- Note:** Prices quoted in this bid do not include any cleaning of roadway, no sweeping, no cutting of grass from shoulders, no debris removed and no washing of roadway.
- Note:** These items are quoted under ALDOT Specifications prior to any special provisions.
- Note:** Ozark Striping Company will accept this bid on an all or none basis only.
- Note:** Ozark Striping Company requires at least 14 days notice before work can begin for scheduling purposes. We would also request that you send us your work orders in a group that contains a 10 Mile Minimum. We would also request at least 14 days to complete our work order. If you accept our bid and issue a purchase order, these terms and conditions will apply.
- Note:** All 2T lines will be shot at 60 mil.


Leon M. Gross, III – President

Storm Drainage
Twin Oaks Environmental

OPELIKA ALABAMA

WWW.TWINKOAKSENV.COM

Erosion Supplies

CULLMAN COUNTY COMMISSIONS CORRUGATED METAL PIPE BID
Bid No. 1369 CONTRACT PERIOD 11/16/2021 to 2/16/2021

- Minimum order of \$4500 required for free freight. For orders less than this amount, there will be a \$2.50 per loaded mile added FOB plant in Winder Ga.
- Orders containing large diameter pipe of 102" or greater requires a wide load permit to transport. There will be an added \$2.00 per loaded mile per truck added FOB plant in Winder Ga.
- **RAW MATERIAL PRICE INCREASE EXCALATION CLAUSE;** Upon advanced written notice to Cullman County Commissions, Twin Oaks Environmental shall be entitled to an immediate adjustment of the price per foot of corrugated metal culvert pipe by the amount of the increase in Raw Materials costs where any increase in Raw Material costs increase the total price per foot of said pipe by 5% or more. Twin Oaks Environmental shall provide sufficient documentation to support any unit price adjustment.

County Representative _____

**CULLMAN COUNTY COMMISSION
ROAD DEPARTMENT**

CORRUGATED METAL CULVERT PIPE - PRICE PER LINEAR FT

BID NO. : 1369

CONTRACT PERIOD: 11-16-2021 TO 2-16-2021

2-2/3" X 1/2" CORRUGATION		Pick-Up		
DIAM	GAGE	Round Galvanized.	Round Aluminized	High Flow (n = approx 0.12)
12"	16 (0.064)	16.22	17.101	
15"	16	20.20	21.27	
18"	16	24.17	25.47	
21"	16	27.98	29.48	
24"	16	31.96	33.67	
30"	16	39.73	41.87	
36"	16	47.51	50.07	
42"	16	55.96	58.97	
48"	16	63.90	67.33	
12"	14 (0.079)	Na	Na	
15"	14	24.83	26.17	
18"	14	29.63	31.22	
21"	14	34.43	36.29	
24"	14	39.23	41.34	
30"	14	48.84	51.47	
36"	14	58.44	61.58	
42"	14	68.04	71.70	
48"	14	77.64	81.81	
21"	12 (0.109)	47.47	58.01	
24"	12	54.09	66.98	
30"	12	67.32	70.92	
36"	12	80.56	84.85	
42"	12	93.78	98.79	
48"	12	107.01	112.74	

Delivered		
Round Galvanized.	Round Aluminized	High Flow (n = approx 0.12)
18.43	19.43	
22.95	24.17	
27.47	28.94	
31.80	33.50	
36.32	38.26	
45.15	47.58	
53.99	56.90	
63.59	67.01	
72.61	76.51	
Na	Na	
28.22	29.74	
33.67	35.48	
39.13	41.24	
44.58	46.98	
55.50	58.49	
66.41	69.98	
77.32	81.48	
88.23	92.97	
53.94	56.83	
61.47	64.75	
76.50	80.59	
91.58	96.42	
106.57	112.26	
121.60	128.11	

High flow is the same price as either galvanized or Aluminized depending on the coating.

CORRUGATED METAL CULVERT PIPE - PRICE PER LINEAR FT

BID NO.: 1369

CONTRACT PERIOD: 11-16-21 TO 2-16-21

3" X 1" Corrugations		Pick-Up	
DIAMETER	GAGE	Round Galvanized.	Round Aluminized
54"	12		
60"	12	146.37	153.64
66"	12	160.30	168.37
72"	12	174.62	183.29
78"	12	188.92	198.31
84"	12	203.22	213.31
90"	12	217.53	228.84
96"	12	231.82	243.34
54"	10	165.35	173.73
60"	10	183.52	192.83
66"	10	202.62	212.89
72"	10	221.74	232.98
78"	10	239.87	252.05
84"	10	258.05	271.14
90"	10	276.20	290.21
96"	10	295.37	310.04

Delivered	
Round Galvanized.	Round Aluminized
166.33	174.59
182.16	191.33
198.44	208.28
214.68	225.33
230.93	242.40
247.19	259.48
263.43	276.52
187.90	197.42
208.56	219.13
230.25	241.93
251.98	270.91
272.58	286.42
293.24	308.11
313.96	329.78
335.64	352.32

3" X 1" Corrugations		Pick-Up	
SPAN-RISE (DIAMETER)	GAGE	Round Galvanized.	Round Aluminized
64"x43" (54")	12	138.87	145.93
71"x47" (60")	12	157.51	163.49
77"x52" (66")	12	170.95	179.62
83"x57" (72")	12	186.21	195.65
87"x63" (78")	12	201.48	212.38
95"x67" (84")	12	216.72	227.71
103"x71" (90")	12	231.99	243.74
112"x75" (96")	12	247.22	259.78
64"x43" (54")	10	176.93	185.89
71"x47" (60")	10	196.36	206.33
77"x52" (66")	10	216.80	227.79
83"x57" (72")	10	237.24	249.29
87"x63" (78")	10	258.06	269.69
95"x67" (84")	10	276.10	290.12
103"x71" (90")	10	295.53	310.52

Delivered	
Round Galvanized.	Round Aluminized
157.81	165.83
178.99	185.78
194.26	204.11
211.60	222.33
228.93	241.34
246.27	258.76
263.63	276.98
280.93	295.20
201.06	211.24
223.14	234.47
246.36	258.85
269.59	283.28
293.25	306.47
313.75	329.68
335.83	352.82

CORRUGATED METAL CULVERT PIPE - PRICE PER LINEAR FT

BID NO. : 1369

CONTRACT PERIOD: 11-16-21 TO 2-16-21

2-2/3" X 1/2" CORRUGATION		Pick-Up	
SPAN-RISE (DIAMETER)	GAGE	Round Galvanized.	Round Aluminized
17"X13" (15")	16 (0.064)	21.62	22.76
21"X15" (18")	16	25.86	27.25
24"X18" (21")	16	29.94	31.55
28"X20" (24")	16	34.20	36.03
35"X24" (30")	16	42.51	44.80
42"X29" (36")	16	50.83	53.57
48"X33" (42")	16	59.88	63.10
57"X38" (48")	16	68.37	72.04
17"X13" (15")	14 (0.079)	26.57	28.00
21"X15" (18")	14	31.70	33.41
24"X18" (21")	14	36.84	38.83
28"X20" (24")	14	41.98	44.23
35"X24" (30")	14	52.26	55.07
42"X29" (36")	14	62.53	65.90
49"X33" (42")	14	72.80	76.72
57"X38" (48")	14	83.07	87.54
24"X18" (21")	12 (0.109)	50.80	47.09
28"X20" (24")	12	57.91	60.97
35"X24" (30")	12	72.03	75.89
42"X29" (36")	12	86.19	90.80
49"X33" (42")	12	100.33	105.72
57"X38" (48")	12	114.51	120.63

Delivered	
Round Galvanized.	Round Aluminized
24.57	25.86
29.39	30.97
34.02	35.85
38.86	46.94
48.31	50.91
57.76	60.88
68.05	71.71
77.69	81.86
30.19	31.82
36.02	37.97
41.86	44.13
47.70	50.26
59.39	62.58
71.06	74.89
82.73	87.18
94.40	99.48
57.73	53.51
65.80	69.28
81.85	86.24
97.94	103.18
114.03	120.14
130.13	137.08

CORRUGATED METAL CULVERT PIPE - PRICE PER LINEAR FT

BID NO.: 1369

CONTRACT PERIOD: 11-16-21 TO 2-16-21

Delivered

112"x76" (96")	10	307.82	323.44	349.80	367.55
----------------	----	--------	--------	--------	--------

BAND CHARGE 12 INCH-38 IX DIA. PER FT. 1x
 42 INCH-60 IX DIA. PER FT. 1.5x
 60 INCH ANCX DIA. PER FT. 1.5x

LIFTING LUGS: \$ 15 ea.

Jeff Clemons
Chairman

John Bullard
County Administrator



Kerry Watson
Associate Commissioner, Place 1

Garry Marchman
Associate Commissioner, Place 2

The Cullman County Commission approved moving December Meeting date from December 21, 2021 to December 28, 2021.

Attest:

A handwritten signature in blue ink, appearing to read "Tiffany Merriman", is written over a horizontal line.

Tiffany Merriman,
County Clerk

A handwritten signature in blue ink, appearing to read "Jeff Clemons", is written over a horizontal line.

Jeff Clemons,
Chairman

A handwritten signature in blue ink, appearing to read "Kerry Watson", is written over a horizontal line.

Kerry Watson,
Associate Commissioner

A handwritten signature in blue ink, appearing to read "Garry Marchman", is written over a horizontal line.

Garry Marchman,
Associate Commissioner